

# **PASSION BEYOND PEDALS**



**MARWI<sup>®</sup>**

2024 Catalogue



**Marwi® Group** is one of the most globally organized manufactures in the bicycle industry, with production sites and offices in 5 countries (Taiwan, Indonesia, Netherlands, Czech Republic and Germany).

With a total of approximately 500 employees, **Marwi® Group** is one of the largest pedal manufacturers in the world.

**Marwi® Group** has dedicated itself to develop a new generation of pedals with the best performance on the world's stage. With over 30 years' experience in the bicycle industry, every step we take will be made to provide better riding equipment and innovative design.

With newly established automatic production lines in Marwi Taiwan, we are...

***PASSION BEYOND PEDALS !***

A thick, multi-colored rainbow graphic curves across the bottom of the page, starting from the left edge and ending near the bottom right corner.



1983

"XERAMA" was established as the English name of the founding Taiwanese company as well as the brand name.

1992

"P.T. Xerama Bicycle Industrial" was founded in Tangerang/Indonesia.

1995

"Marwi International A/S" obtained the UNION® brand.

1998

"Marwi International A/S" merged with "Xerama Taiwan" and "Xerama Indonesia" into the new "Marwi Group". The Marwi Group owned from now on the brands UNION®, Ti-Dye®, and nightpro®.



2000

Marwi Europe's headquarters in the Netherlands was founded.

2007

Marwi Taiwan took the annual award for bicycle accessories in the "innovative product awards" from the TBEA (Taiwan Bicycle Exporter's Association).

2009

Marwi won the 11<sup>th</sup> Taiwanese "overseas businessman award" from MOEA.

2010

Marwi Europe moved into their new office building.

2011

Marwi Taiwan completed their new office and factory building.



2012

Marwi Taiwan celebrate their 30<sup>th</sup> year anniversary.

2013

Marwi Taiwan set up automatic production lines for pedals and saddles.

2014

Marwi Taiwan installed the first robots in the Taiwan bike industry.

2015

Marwi Taiwan completed the first fully automatic pedal assembly line.

2016

Marwi Taiwan opened its own moulding factory.



2017

Marwi Taiwan installed robot automated aluminium die-casting.

2018

Marwi Taiwan installed their second saddle foaming carousel machine.

2019

Marwi introduced the patented SANDBLOCK® pedal technology.

2020

Marwi Taiwan starts building a new factory.

2021

Marwi Taiwan finished building the new factory.

2022

The First Year of Marwi Group ESG.

2023

GHG Inventory and Pedal CFP are both verified.

2024

Marwi Group is **PASSION BEYOND PEDALS.**





**Brand new!**

**Factory  
Building**

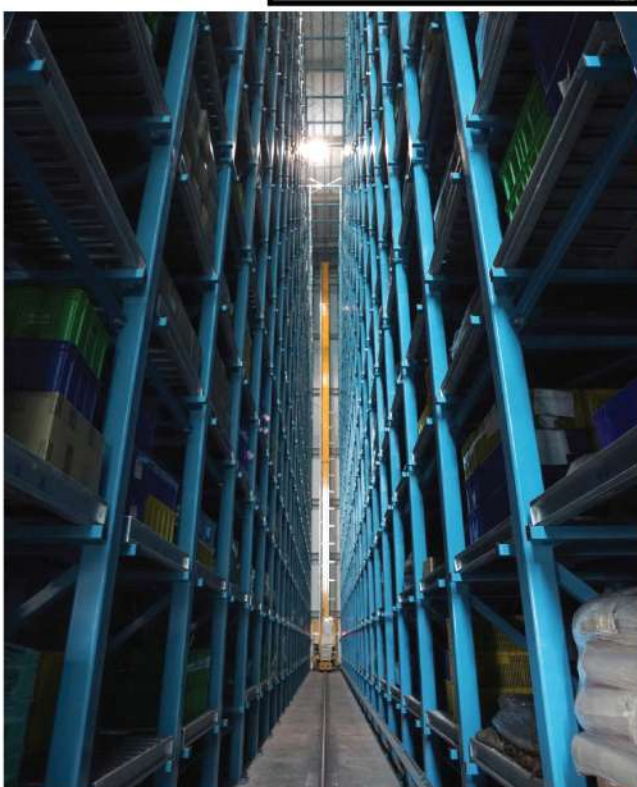
- State of the art smart technology
- Sustainable and energy-saving
- Increased capacity





## Fully Computerized Production Control System

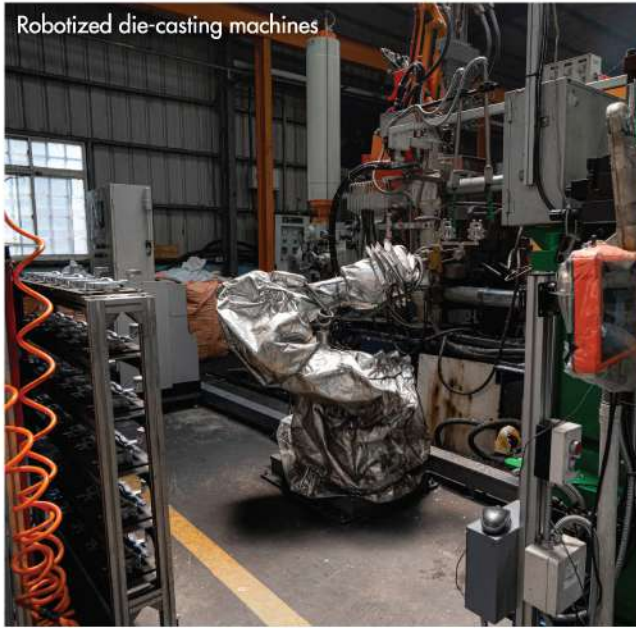
- "One touch" overview by tablets
- Monitored on every production level



## Robotized Automatic Warehouse System

- Fully automated product picking system





Robotized die-casting machines



Injection molding department



Robotized 2-component injection molding



Camera system robotized pedal assembly line



Robotized pedal assembly line



Vacuum saddle production carousel



Saddle printing department



Vacuum saddle production carousel

CNC department



Automatic packing line



## Rigorous Fatigue Testing

In our new Quality Control Laboratory we investigate the products and components with the newest testing equipment.

We examine permanently with static and dynamic strength and durability tests, deep temperature impact tests, etc...

Overview testing facility



Saddle and seatpost fatigue test

Overview testing facility

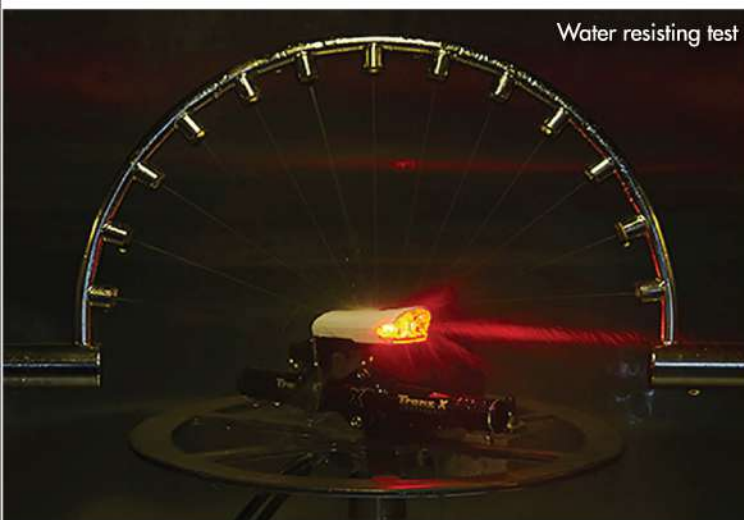
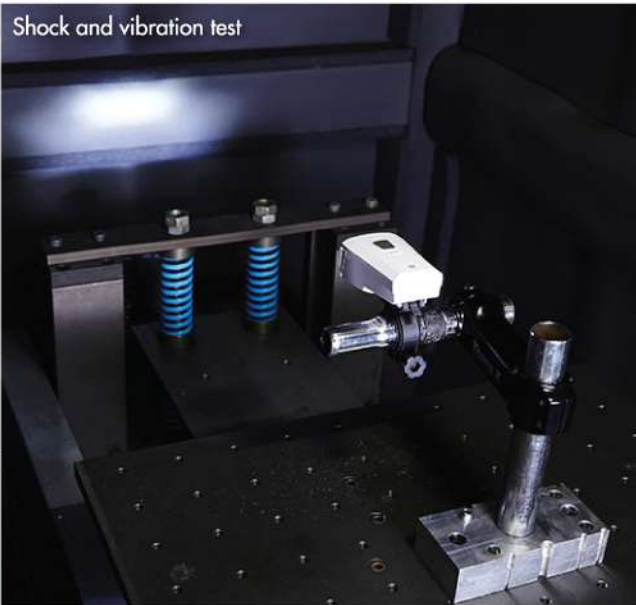


Shock and vibration test



## Quality-Inspection

According to our QA/QC-System we control with several QC-tests the various production steps. Furthermore we check the numerous quality parameters of components and products, like hardness, dimensions, water resistance, environmental and chemical resistance (salt spray test) and others...



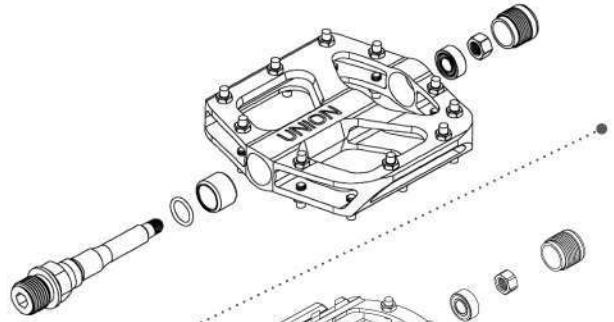




# Pedal Bearing Systems

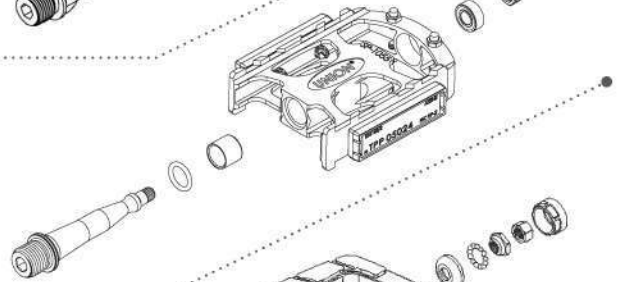
NCS

- **Needle + Cartridge System**  
heat-treated Cr-Mo axle  
(made in Taiwan)



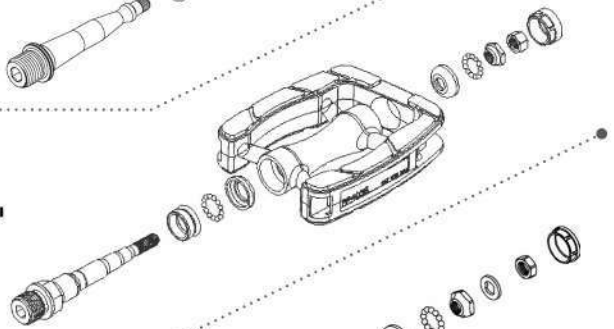
CBS

- **Cartridge + Bushing System**  
heat-treated Cr-Mo axle  
(made in Taiwan)



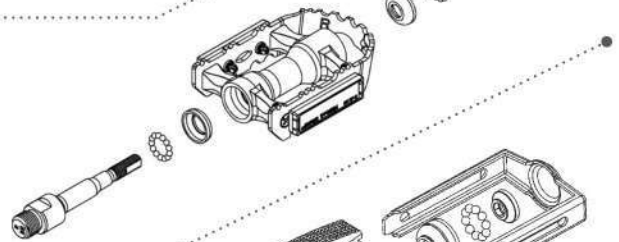
LBA

- **Adjustable light weight ball bearings 3/32"**  
heat-treated boron steel axle



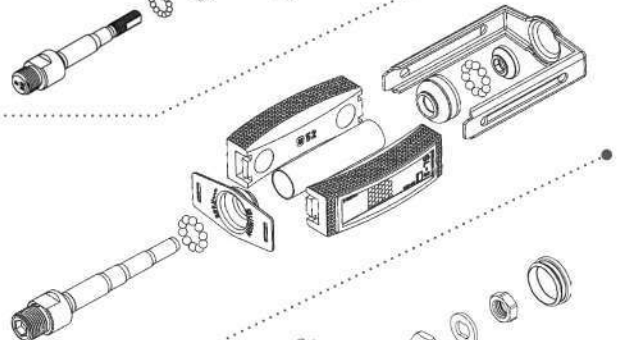
BA

- **Adjustable ball bearings 1/8"**  
heat-treated boron steel axle



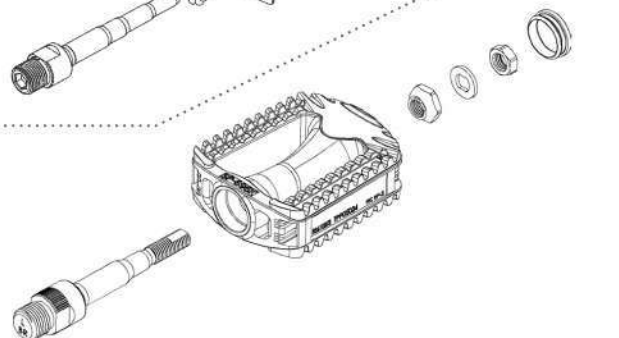
BC

- **Ball bearings, classic type**  
heat-treated boron steel axle



NB

- **Adjustable Non-Ball bearing type**  
heat-treated boron steel axle





# CONTENT

- 12 - 28 UNION** Pedals
- 29 - 30 Selle San Remo** Saddles
- 31 - 34 SSR Pro** Saddles
- 35 - 36 UNION** Steel & Aluminium Hubs
- 37 - 38 UNION** E-Bike Lights
- 39 - 41 UNION** Dynamo Lights & Dynamos
- 42 - 43 UNION** Battery Lights
  - 44 UNION** Li-Ion Battery Lights
  - 45 UNION** Cycle Computers
- 46 - 47 BikeTool** Bicycle Tools
- 48 - 49 UNION** Bicycle Chains
- 50 - 58 UNION** Gear Hangers
- 59 - 63 UNION** Bicycle Bearings
- 64 - 67 UNION** Disc Brake Pads
- 68 - 69 UNION** Brake Shoes
- 70 - 71 UNION** Cable & Wire
- 72 - 77 UNION** MTB / Trekking Parts

 **UNION**<sup>®</sup>  **xerama**  **BIKETOOL**

 **SSR Pro** *Selle San Remo*

**SANDBLOCK**<sup>®</sup>



#### AXLE

BR	Boron steel
CM	CrMo steel
T	Titanium

#### REFLECTOR

BS	Approved
TW	Non-Approved
SI	Screw-in
SO	Snap-on
OB	Snap-on & build-in

#### BEARING

NCS	Needle+Cartridge System
CCS	Cartridge + Cartridge System
CBS	Cartridge+Bushing System
LBA	Lightweight Ball type, adjustable
BA	Ball type, adjustable
BC	Ball type, classic
NB	Non-Ball type, adjustable
BL	Ball less

#### BODY

SA	Sand blasting+Anodized color
SD	Sand blasting+ED black
ED	ED black
CNC	Body corner with CNC processed

#### CAGE

AL	Aluminium
ST	Steel
NL	Nylon
AN	Anodized
BA	Black anodized
BC	Black coated
PC	Powder-coated
CNC	CNC processed

# SANDBLOCK®

is the official logo and MARWI's registered trademark of a patented compound of materials to achieve a wear-resistant high quality non-slip pedal tread area. Due to a special, waterproof technology the non-slip inlay cannot be peeled off from the pedal cage.



### Features:

- Tread surfaces made of **SANDBLOCK®** connected to the body by a chemical process.
  - For the **SANDBLOCK®** non-slip compound a patent is pending.
- The anti-slip function of the **SANDBLOCK®** material outperforms compared to standard sandpaper.
- Standard sandpaper tread area separates very easy from the pedal body, **SANDBLOCK® does not!**



### SP-880 SBL BLACK

BR LBA BS



**Body:** PP with SANDBLOCK® non-slip inlay  
**Size:** 118 x 88 mm  
**Weight:** 341 gram/pair

### SP-890 / SP-2890 SBL BLACK

BR LBA BS / CM CBS BS



**Body:** Aluminium with SANDBLOCK® non-slip inlay  
**Size:** 118 x 88 mm  
**Weight:** 506 gram/pair

### SP-827 SBL BLACK

BR LBA BS



**Body:** PP with SANDBLOCK® non-slip inlay  
**Size:** 111 x 90 mm  
**Weight:** 348 gram/pair

### SP-827 SBL

BR LBA BS



**Body:** PP with SANDBLOCK® non-slip inlay  
**Size:** 111 x 90 mm  
**Weight:** 348 gram/pair

### SP-828 / SP-2828 SBL GREY

BR LBA ED BS / CM CBS BS



**Body:** Aluminum with PP and SANDBLOCK® non-slip inlay  
**Size:** 111 x 90 mm  
**Weight:** 494 gram/pair

### SP-828 SBL BLACK

BR LBA BS



**Body:** Aluminum with PP and SANDBLOCK® non-slip inlay  
**Size:** 111 x 90 mm  
**Weight:** 494 gram/pair



### SP-1210 BLACK

CM CBS SA



**Body:** AL-6061 Extrusion T6  
**Size:** 104 × 100mm  
**Weight:** 304 gram/pair



SILVER ORANGE XTR GREY



BLUE GREEN RED

### SP-1300 SILVER

CM CBS SA



**Body:** AL-6061 Extrusion T6  
**Size:** 110 × 100mm  
**Weight:** 416 gram/pair



BLACK ORANGE XTR GREY



BLUE GREEN RED

### SP-1400

CM CBS SA



**Body:** AL-6061 Extrusion T6  
**Size:** 110 × 100 mm  
**Weight:** 414 gram/pair

### SP-1410

CM CBS SA



**Body:** AL-6061 Extrusion T6  
**Size:** 110 × 100 mm  
**Weight:** 412 gram/pair

### SP-1080

CM NCS SA



**Body:** AL-6061 Extrusion T6  
**Size:** 101 × 100mm  
**Weight:** 336 gram/pair

### SP-1082

CM NCS SA



**Body:** AL-6061 Extrusion T6  
**Size:** 111 × 100mm  
**Weight:** 334 gram/pair



### SP-1090

CM CBS SA



**Body:** AL-6061 Extrusion T6  
**Size:** 97 × 100mm  
**Weight:** 300 gram/pair

### SP-1091

CM CBS SD



**Body:** One piece aluminium  
**Size:** 97 × 100mm  
**Weight:** 347 gram/pair

### SP-2150

CM CBS SD BS SO



**Body:** One piece aluminium  
**Size:** 99 × 72 mm  
**Weight:** 314 gram/pair

### SP-2160

CM CBS SD BS SO



**Body:** One piece aluminium  
**Size:** 101 × 87mm  
**Weight:** 339 gram/pair

### SP-2170

CM CBS ED BS SO



**Body:** One piece aluminium  
**Size:** 100 × 100 mm  
**Weight:** 403 gram/pair

### SP-2309

CM NCS SD BS SO



**Body:** One piece aluminium  
**Size:** 111 × 100 mm  
**Weight:** 592 gram/pair

### SP-1055

CM CBS SA BS SO



**Body:** AL-6061 Extrusion T6  
**Size:** 100 × 73mm  
**Weight:** 250 gram/pair

### SP-2712

CM CBS SA BS SO



**Body:** AL-6061 Extrusion T6  
**Size:** 90 × 59mm  
**Weight:** 204 gram/pair

### SP-2714

CM CBS BS SO



**Body:** AL-6061 Extrusion T6  
**Size:** 95 × 73mm  
**Weight:** 234 gram/pair



### SP-160

BR LBA SD BS SO



**Body:** One piece aluminium  
**Size:** 107 x 87mm  
**Weight:** 348 gram/pair

### SP-2600

CM CBS SD CNC BS SO



**Body:** One piece aluminium & CNC side  
**Size:** 102 x 78mm  
**Weight:** 290 gram/pair

### SP-2661

CM CBS BS SI or SO

AL BA



**Body:** Aluminium with cage  
**Size:** 102 x 76mm  
**Weight:** 250 gram/pair

### SP-170

BR LBA BS SO



**Body:** One piece aluminium  
**Size:** 100 x 100mm  
**Weight:** 403 gram/pair

### SP-2612

BR LBA BS SI or SO

AL BA



**Body:** Aluminium with cage  
**Size:** 107 x 81mm  
**Weight:** 283 gram/pair

### SP-2662

BR LBA BS SI or SO

AL BA



**Body:** Aluminium with cage  
**Size:** 102 x 76mm  
**Weight:** 272 gram/pair

### SP-2672

BR LBA BS SI or SO

AL BA



**Body:** Aluminium with cage  
**Size:** 88 x 76mm  
**Weight:** 245 gram/pair

### SP-1092

BR LBA SD



**Body:** One piece aluminium  
**Size:** 97 x 100mm  
**Weight:** 350 gram/pair

### SP-600

BR LBA SD CNC BS SO



**Body:** One piece aluminium & CNC side  
**Size:** 102 x 78mm  
**Weight:** 274 gram/pair



### SP-610 BLACK

BR BA SD BS or TW SO



**Body:** One piece aluminium  
**Size:** 105 x 81mm  
**Weight:** 374 gram/pair

### SP-120

BR BA BS or TW SO



**Body:** One piece aluminium  
(different color options)  
**Size:** 110 x 100mm  
**Weight:** 470 gram/pair

### SP-102

BR BA BS SO



**Body:** One piece aluminium  
(different color options)  
**Size:** 108 x 102mm  
**Weight:** 434 gram/pair

### SP-108

BR BA BS or TW SO



**Body:** One piece aluminium  
**Size:** 111 x 115mm  
**Weight:** 518 gram/pair

### SP-309

BR BA SD



**Body:** One piece aluminium  
**Size:** 113 x 100 mm  
**Weight:** 570 gram/pair

### SP-311

BR BA BS SI or SO

ST PC or AL AN



**Body:** Aluminium with cage  
**Size:** 102 x 63mm  
**Weight:** 360 gram/pair

### SP-910

BR BA BS SI or SO

ST PC or AL AN



**Body:** Aluminium with cage  
**Size:** 102 x 63mm  
**Weight:** 370 gram/pair

### SP-931

BR BA BS SI or SO

ST PC or AL AN



**Body:** PP  
**Size:** 102 x 79mm  
**Weight:** 316 gram/pair

### SP-931T

BR BA BS SI or SO

ST PC or AL AN



**Body:** PP  
**Size:** 102 x 79mm  
**Weight:** 316 gram/pair



## SP-151

BR BA BS

NL



**Function:** foldable to both sides  
**Body:** Aluminium body/Nylon cage  
**Size:** 110 x 70mm  
**Weight:** 425 gram/pair

## SP-153

BR BA BS

NL



**Function:** foldable to both sides  
**Body:** Aluminium body/Nylon cage with non-slip inlay  
**Size:** 110 x 70mm  
**Weight:** 470 gram/pair

## SP-157

CM CBS BS

NL



NEW



**Function:** foldable to both sides  
**Body:** Aluminum body/Nylon cage with **SANDBLOCK®** non-slip inlay  
**Size:** 113.2 x 88.2mm  
**Weight:** 462 gram/pair



### SP-823

BR LBA BS



<b>Body:</b>	Aluminium with PP and non-slip inlay
<b>Size:</b>	103 × 78 × 26mm
<b>Weight:</b>	291 gram/pair

### SP-821

BR LBA BS



<b>Body:</b>	Aluminium with PP and non-slip inlay
<b>Size:</b>	104 × 82 × 26mm
<b>Weight:</b>	316 gram/pair

### SP-828

BR LBA BS



<b>Body:</b>	Aluminium with PP and non-slip inlay
<b>Size:</b>	111 × 90mm
<b>Weight:</b>	516 gram/pair

### SP-2823 BLACK

CM CBS ED BS



<b>Body:</b>	Aluminium with PP and non-slip inlay
<b>Size:</b>	104 × 78 × 26mm
<b>Weight:</b>	280 gram/pair

### SP-2821 BLACK

CM CBS ED BS



<b>Body:</b>	Aluminium with PP and non-slip inlay
<b>Size:</b>	104 × 82 × 26mm
<b>Weight:</b>	320 gram/pair

### SP-2828 BLACK

CM CBS ED BS



<b>Body:</b>	Aluminium with PP and non-slip inlay
<b>Size:</b>	111 × 90mm
<b>Weight:</b>	504 gram/pair

### SP-2180

CM CBS BS or TW



NEW

<b>Body:</b>	Aluminium with non-slip inlay
<b>Size:</b>	100 × 95 × 25mm
<b>Weight:</b>	457 gram/pair

### SP-180

BR LBA BS or TW



NEW

<b>Body:</b>	Aluminium with non-slip inlay
<b>Size:</b>	100 × 95 × 25mm
<b>Weight:</b>	457 gram/pair

### SP-824

BR BA BS



NEW

<b>Body:</b>	Aluminium with PP and non-slip inlay
<b>Size:</b>	110 × 82 × 29 mm
<b>Weight:</b>	412 gram/pair



### SP-812

BR BA BS or TW



**Body:** Aluminium with PP and non-slip inlay  
**Size:** 112 x 81 x 29mm  
**Weight:** 495 gram/pair

### SP-810

BR BA BS or TW



**Body:** Aluminium with non-slip inlay  
**Size:** 103 x 69mm  
**Weight:** 541 gram/pair

### SP-2811

CM CBS BS



**Body:** Aluminium with non-slip inlay  
**Size:** 108 x 69mm  
**Weight:** 376 gram/pair

### SP-811

BR BA BS or TW



**Body:** Aluminium with non-slip inlay  
**Size:** 108 x 69mm  
**Weight:** 398 gram/pair

### SP-813

BR BA BS or TW



**Body:** PP with non-slip inlay  
**Size:** 110 x 69mm  
**Weight:** 290 gram/pair

### SP-820

BR LBA BS or TW



**Body:** PP with non-slip inlay  
**Size:** 104 x 82 x 26mm  
**Weight:** 280 gram/pair

### SP-827

BR LBA BS or TW



**Body:** PP with non-slip inlay  
**Size:** 109 x 90mm  
**Weight:** 364 gram/pair

### SP-807

BR BA BS or TW



**Body:** PP (black or grey) with non-slip inlay (grey or black)  
**Size:** 108 x 74mm  
**Weight:** 366 gram/pair

### SP-808

BR BA BS or TW



**Body:** PP (black or grey) with non-slip inlay (grey or black)  
**Size:** 108 x 78mm  
**Weight:** 368 gram/pair

### SP-809

BR BA BS or TW



**Body:** PP (black) with non-slip inlay (grey)  
**Size:** 108 x 78mm  
**Weight:** 370 gram/pair

### SP-868

BR BA BS or TW



**Body:** Aluminium with PVC  
**Size:** 108 x 69mm  
**Weight:** 500 gram/pair

### SP-872N

BR BA or NB or BL  
BS or TW



**Body:** PP  
**Size:** 109 x 91mm  
**Weight:** 286 gram/pair

### SP-875

BR BA or NB  
BS or TW



**Body:** PP  
**Size:** 108 x 84mm  
**Weight:** 292 gram/pair

### SP-877

BR BA or NB or BL  
BS or TW



**Body:** PP  
**Size:** 110 x 79mm  
**Weight:** 318 gram/pair

### SP-878

BR BA or NB or BL  
BS or TW



**Body:** PP  
**Size:** 109 x 91mm  
**Weight:** 298 gram/pair

### SP-698

BR BA or BL BS or TW



**Body:** PP  
**Size:** 114 x 83mm  
**Weight:** 279 gram/pair

### SP-202

BR BA BS or TW



**Body:** PP  
**Size:** 104 x 90mm  
**Weight:** 324 gram/pair

### SP-300

BR BA or BL BS or TW



**Body:** PP  
**Size:** 108 x 69mm  
**Weight:** 322 gram/pair



### SP-301

BR BA BS or TW



**Body:** PP  
**Size:** 113 x 74mm  
**Weight:** 324 gram/pair

### SP-305

BR BA BS or TW



**Body:** PP  
**Size:** 108 x 69mm  
**Weight:** 284 gram/pair

### SP-460

BR BA BS or TW



**Body:** PP  
**Size:** 110 x 100mm  
**Weight:** 305 gram/pair

### SP-450

BR BA BS or TW



**Body:** PP  
**Size:** 110 x 100mm  
**Weight:** 330 gram/pair

### SP-420

CM LBA BS



**Body:** Nylon + 30% Glass Fiber  
**Size:** 110 x 100mm  
**Weight:** 338 gram/pair

### SP-410

BR BA or NB

BS or TW



**Body:** PP  
**Size:** 112 x 100mm  
**Weight:** 352 gram/pair

### SP-400

BR BA BS or TW



**Body:** PP  
**Size:** 110 x 100mm  
**Weight:** 336 gram/pair

### SP-420 COLOR

CM LBA BS



**Body:** Nylon + 30% Glass Fiber (different color options)  
**Size:** 110 x 100mm  
**Weight:** 338 gram/pair

### SP-700

BR BA or BL

BS or TW



**Body:** PP  
**Size:** 111 x 86mm  
**Weight:** 325 gram/pair

### SP-767

BR BA or BL  
BS or TW



Body: PP  
Size: 113 x 87mm  
Weight: 337 gram/pair

### SP-320

BR BA  
BS or TW



Body: PP  
Size: 125 x 78mm  
Weight: 386 gram/pair

### SP-201

BR BA BS or TW



Body: PP  
Size: 87 x 70mm  
Weight: 267 gram/pair

### SP-481

BR BA or NB or BL  
BS or TW



Body: PP  
Size: 98 x 64mm  
Weight: 278 gram/pair

### SP-834

BR BA BS or TW



Body: PP with non-slip inlay(grey)  
Size: 97 x 72mm  
Weight: 332 gram/pair

### SP-835

BR BA BS or TW



Body: PP with non-slip inlay(grey)  
with additional side reflector  
Size: 97 x 72mm  
Weight: 334 gram/pair

### SP-690

BR BA or NB or BL  
BS or TW



Body: PP  
Size: 95 x 64mm  
Weight: 271 gram/pair

### SP-695K

BR BA or NB or BL  
BS or TW



Body: PP (optional w/o reflector)  
Size: 91 x 65mm  
Weight: 270 gram/pair

### SP-698K

BR BA or BL  
BS or TW



Body: PP  
Size: 98 x 68mm  
Weight: 248 gram/pair



### SP-687H

BR BC BS or TW



**Body:** steel (galvanized ) & PVC mixture  
**Size:** 117 × 76mm  
**Weight:** 572 gram/pair

### SP-685H

BR BC BS or TW



**Body:** steel (galvanized ) & PVC mixture  
**Size:** 118 × 79mm  
**Weight:** 562 gram/pair

### SP-689

BR BC BS



**Body:** steel (galvanized ) & PVC mixture  
**Size:** 118 × 63mm  
**Weight:** 540 gram/pair

### SP-687H WHITE

BR BC BS or TW



**Body:** steel (galvanized ) & PVC mixture  
**Size:** 117 × 76mm  
**Weight:** 572 gram/pair

### SP-685H WHITE

BR BC BS or TW



**Body:** steel (galvanized ) & PVC mixture  
**Size:** 118 × 79mm  
**Weight:** 562 gram/pair

### SP-689 WHITE

BR BC BS



**Body:** steel (galvanized ) & PVC mixture  
**Size:** 118 × 63mm  
**Weight:** 540 gram/pair

### 261

BR BC



**Body:** steel (galvanized ) & PVC mixture  
**Size:** 122 × 58mm  
**Weight:** 625 gram/pair

### 265H

BR BC



**Body:** steel (galvanized ) & PVC mixture  
**Size:** 118 × 72mm  
**Weight:** 560 gram/pair

### SP-689 BROWN

BR BC BS



**Body:** steel (galvanized ) & PVC mixture  
**Size:** 118 × 63mm  
**Weight:** 540 gram/pair

## SP-308

BR CCS SD BS SO



**Body:** One piece aluminium  
**Size:** 114 × 109 mm  
**Weight:** 635 gram/pair

## SP-5200

CM NCS



### Dual-Function Fitness pedal

**Body:** Aluminium  
**Size:** 117 × 98mm  
**Weight:** 614(standard) gram/pair  
714(Heavy Duty) gram/pair  
**Cleat:** UM-1 included, Shimano 51 compatible

## SP-5300

CM NCS



Clipless low profile RACE pedal, for use in combination with innovative URK cleats

**Body:** Aluminium  
**Size:** 95 × 97 mm  
**Weight:** 560(Heavy Duty) gram/pair  
**Cleat:** URK-6 included, LOOK KEO compatible



## FOIA

FB CB VU ES EBR

**Top:** PU  
**Base:** black PP + Glass fiber  
**Size:** 255 × 220 mm  
**Weight:** 665 gram/pair



## SP-250

BR BA



<b>With horizontal balance weight</b>	
<b>Function:</b>	non slip home trainer pedal
<b>Body:</b>	PP with non-slip inlay (grey)
<b>Size:</b>	137 × 123mm
<b>Weight:</b>	660 gram/pair

## SP-240

BR BA



<b>With horizontal balance weight</b>	
<b>Function:</b>	home trainer pedal
<b>Body:</b>	PP
<b>Size:</b>	137 × 123mm
<b>Weight:</b>	640 gram/pair

## SP-260

BR BA



<b>With horizontal balance weight</b>	
<b>Function:</b>	non slip home trainer pedal
<b>Body:</b>	PP with non-slip inlay
<b>Size:</b>	155 × 142mm
<b>Weight:</b>	1200 gram/pair

NEW

## MT-1



<b>• For use with straps</b>	
<b>Function:</b>	MTB/ATB toe clip
<b>Material:</b>	nylon

## MT-2



<b>• For strapless use</b>	
<b>Function:</b>	MTB/ATB toe clip
<b>Material:</b>	nylon

## MT-11



<b>• For use with straps</b>	
<b>Function:</b>	MTB/ATB toe clip
<b>Material:</b>	nylon
<b>Reflector:</b>	integrated (approved, screw-in)

## MT-13



<b>• For use with straps</b>	
<b>Function:</b>	Road/Trekking toe clip
<b>Material:</b>	PP
<b>Reflector:</b>	integrated (approved, screw-in)

## MT-14



<b>• For strapless use</b>	
<b>Function:</b>	Road /MTB/Trekking toe clip
<b>Material:</b>	PP
<b>Reflector:</b>	integrated (approved, screw-in)

## STRAP-N



<b>Function:</b>	for use with MT-11 or MT-1 toe clip
<b>Material:</b>	PP woven
<b>Size:</b>	12.5 × 450mm

## SP-5600

CM or T CBS



### Clipless low profile "mud free" MTB pedal

**Body:** Aluminium, black coated

**Size:** 81 x 65mm

**Weight:** 298 (CrMo) gram/pair

254 (Titanium) gram/pair

**Cleat:** UM-1 inclusive, Shimano 51 compatible

## SP-5600 RED

CM or T CBS



### Clipless low profile "mud" MTB pedal

**Body:** Aluminium, red coated

option: white coated

**Size:** 81 x 65mm

**Weight:** 298 (CrMo) gram/pair

254 (Titanium) gram/pair

**Cleat:** UM-1 inclusive, Shimano 51 compatible

## SP-5650

CM LBA



### Clipless low profile "mud free" MTB pedal

**Body:** Aluminium, black coated

**Size:** 82 x 59mm

**Weight:** 334 gram/pair

**Cleat:** UM-1 inclusive, Shimano 51 compatible

## SP-5400

CM CBS



### Clipless RACE pedal

**Body:** Aluminium, polished

**Size:** 80 x 65mm

**Weight:** 310 gram/pair

**Cleat:** UM-1 inclusive, Shimano 51 compatible

## SP-5500

CM CBS



### Dual-Function Trekking-Bike pedal

**Body:** Aluminium, silver coated

**Size:** 85 x 84mm

**Weight:** 352 gram/pair

**Cleat:** UM-1 inclusive, Shimano 51 compatible

## SP-5750

CM LBA



### Clipless low profile RACE pedal

**Body:** Aluminium, silver coated

**Size:** 84 x 91mm

**Weight:** 294 gram/pair

**Cleat:** UR-5 (Look ARC compatible) inclusive

## SP-5700

CM or T CBS



### Clipless low profile RACE pedal

**Body:** Aluminium, high polished

**Size:** 80 x 92mm

**Weight:** 294 (CrMo) gram/pair

250 (Titanium) gram/pair

**Cleat:** UR-5 (Look ARC compatible) inclusive

## SP-5700K

CM or T CBS



### Clipless low profile RACE pedal, for use in combination with innovative URK cleats

**Body:** Aluminium, silver coated

**Size:** 78 x 91mm

**Weight:** 326 (CrMo) gram/pair

282 (Titanium) gram/pair

**Cleat:** URK-6 (Look KEO compatible) inclusive

## SP-5700K BLACK

CM or T CBS



### Clipless low profile RACE pedal, for use in combination with innovative URK cleats

**Body:** Aluminium, black coated

option: white or red coated

**Size:** 78 x 91mm

**Weight:** 326 (CrMo) gram/pair

282 (Titanium) gram/pair

**Cleat:** URK-6 (Look KEO compatible) inclusive



## SP-5800

CM CBS BS AL BA



**Dual-Function Trekking-Bike pedal, with "non slip" elastomer tread**

**Body:** Aluminium, ball polished

**Size:** 101 × 65mm

**Weight:** 354 gram/pair

**Cleat:** UM-1 inclusive, Shimano 51 compatible

## SP-5850

CM LBA BS AL BA



**Dual-Function Trekking-Bike pedal, with "non slip" elastomer tread**

**Body:** Aluminium, ball polished

**Size:** 102 × 65mm

**Weight:** 372 gram/pair

**Cleat:** UM-1 inclusive, Shimano 51 compatible

## SP-5900

CM CBS AL BA



**Dual-Function MTB pedal, with reinforced axle and bearings**

**Body:** Aluminium, ball polished

**Size:** 105 × 65mm

**Weight:** 446 gram/pair

**Cleat:** UM-1 inclusive, Shimano 51 compatible

## UM1



- MTB cleat, black coated, with improved mud clearance
- Shimano 51 compatible
- 4° lateral float
- Set with 2 cleats / 2 washers / 4 screws

**Material:** CrMo (SCM-415)

**Weight:** 54 gram/set

## UR5



- Racing cleat, "float", red
- Look "ARC" compatible
- 9° lateral float
- Set with 2 cleats / 6 washers / 6 screws

**Material:** reinforced Nylon

**Weight:** 88 gram/set

## UR6



- Racing cleat, black
- Look "ARC" compatible
- 3° lateral float
- Set with 2 cleats / 6 washers / 6 screws

**Material:** reinforced Nylon

**Weight:** 88 gram/set

## URK-0



- Racing cleat, Look KEO compatible
- Fix, (0° lateral float) / black
- Set with 2 cleats / 6 washers / 6 screws

**Material:** reinforced Nylon & TPR

**Weight:** 52 gram/set

## URK-6



- Racing cleat, Look KEO compatible
- 6° lateral float / red
- Set with 2 cleats / 6 washers / 6 screws

**Material:** reinforced Nylon & TPR

**Weight:** 52 gram/set

## URK-9



- Racing cleat, Look KEO compatible
- 9° lateral float / gray
- Set with 2 cleats / 6 washers / 6 screws

**Material:** reinforced Nylon & TPR

**Weight:** 52 gram/set

BIKE | CB Commuter bike  
EB E-bike  
KID Kids bike

ATB ATB  
MTB MTB  
RB Road bike



## VIENNA

EB CB VU ES EBR

**Top:** PU  
**Base:** black PP + Glass fiber  
**Size:** 252 × 222mm  
**Weight:** 519 (steel) gram/pc



## LINDAU

EB CB VU EBR

**Top:** PU  
**Base:** black PP  
**Size:** 258 × 190mm  
**Weight:** 443 (steel) gram/pc



## LUGANO

EB CB VU ES EBR

**Top:** PU  
**Base:** black Nylon + Glass fiber  
**Size:** 255 × 231mm  
**Weight:** 896 (steel) gram/pc



## MONACO

EB CB VU ES EBR

**Top:** PU  
**Base:** black PP + Glass fiber  
**Size:** 255 × 220mm  
**Weight:** 720 (steel) gram/pc



## VERONA

EB CB VU EBR

**Top:** PU  
**Base:** black PP  
**Size:** 265 × 200mm  
**Weight:** 450 (steel) gram/pc



## VARESE

EB CB VU GEL EBR

**Top:** PU  
**Base:** black PP  
**Size:** 265 × 200mm  
**Weight:** 450 (steel) gram/pc



## DONAU

CB HD EBR

**Top:** PU  
**Base:** black PP + Glass fiber  
**Size:** 258 × 186mm  
**Weight:** 439 (steel) gram/pc



## MOSEL

CB HD EBR

**Top:** PU  
**Base:** black PP + Glass fiber  
**Size:** 280 × 171mm  
**Weight:** 395 (steel) gram/pc





**FOAM** (GEL) w / Gel inlay  
 (HD) High density foam  
 (HR) High Resilience foam padded  
 (VU) Vacuum

**RAIL** (SR) Ø7mm steel rail  
 (ES) Elastomer  
 (SPS) Spring w / safety cover

(ST) Satin steel rail  
 (EBR) ED black steel rail

**CLAMP** (CS) Clamp set

### MÂCON

(EB) (CB) (VU) (EBR)

**Top:** PU  
**Base:** black PP + Glass fiber  
**Size:** 275 × 162mm  
**Packing:** 20 pcs./carton  
 Brown cover available



### LIÈGE

(EB) (CB) (VU) (EBR)

**Top:** PU  
**Base:** black PP + Glass fiber  
**Size:** 257 × 215mm  
**Packing:** 20 pcs./carton  
 Brown cover available



### ZURIGO

(EB) (CB) (VU) (EBR)

**Top:** PU  
**Base:** black PP  
**Size:** 260 × 210mm  
**Packing:** 20 pcs./carton



### TORINO

(ATB) (MTB) (VU) (EBR)

**Top:** PU  
**Base:** black Nylon + Glass fiber  
**Size:** 270 × 170mm  
**Packing:** 420 (steel) gram/pc



### TAUNUS

(ATB) (MTB) (HD) (EBR)

**Top:** PU  
**Base:** black PP  
**Size:** 249 × 157mm  
**Weight:** 422 (steel) gram/pc



### 3220

(CB) (HR) (SR) (SPS) (CS)

**Top:** Vinyl (3220)  
**Base:** black PP  
**Size:** 252 × 225mm  
**Packing:** 20 pcs./carton  
 Brown cover available



### 3240

(CB) (HR) (SR) (ES) (CS)

**Top:** Vinyl (3240)  
**Base:** black PP  
**Size:** 251 × 219mm  
**Packing:** 20 pcs./carton  
 Brown cover available



### 3250

(CB) (HR) (SR) (ES) (CS)

**Top:** Vinyl  
**Base:** black PP  
**Size:** 252 × 220mm  
**Packing:** 20 pcs./carton



### 3110

(ATB) (MTB) (HR) (SR) (CS)

**Top:** Vinyl  
**Base:** black PP  
**Size:** 260 × 160mm  
**Packing:** 20 pcs./carton



### 3130

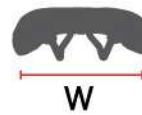
(ATB) (MTB) (HR) (SR) (CS)

**Top:** Vinyl  
**Base:** black PP  
**Size:** 266 × 148mm  
**Packing:** 20 pcs./carton



BIKE	ATB	ATB
	MTB	MTB
	RB	Road bike
	LB	Lady bike

DB	Downhill bike
CB	Commuter bike
ORB	Off road bike
EB	E-bike



## VENTOUX

RB SL CNT

<b>Top:</b>	PU + Micro fiber
<b>Base:</b>	black Nylon + Glass fiber
<b>Size:</b>	285 × 125mm
<b>Weight:</b>	199(CrNi/Ti) gram/pc



## VENTOUX WHITE

RB SL CNT

<b>Top:</b>	PU + Micro fiber
<b>Base:</b>	black Nylon + Glass fiber
<b>Size:</b>	285 × 125mm
<b>Weight:</b>	199(CrNi/Ti) gram/pc



## TOURMALET

RB MTB SL CNT

<b>Top:</b>	PU + Micro fiber
<b>Base:</b>	black Nylon + Glass fiber
<b>Size:</b>	280 × 130mm
<b>Weight:</b>	234(CrNi/Ti) gram/pc



## TOURMALET WHITE

RB MTB SL CNT

<b>Top:</b>	PU + Micro fiber
<b>Base:</b>	black Nylon + Glass fiber
<b>Size:</b>	280 × 130mm
<b>Weight:</b>	234(CrNi/Ti) gram/pc



## POGGIO

RB MTB SL CNT

<b>Top:</b>	PU + Micro fiber
<b>Base:</b>	black Nylon + Glass fiber
<b>Size:</b>	290 × 135mm
<b>Weight:</b>	225(CrNi/Ti) gram/pc



## POGGIO WHITE

RB MTB SL CNT

<b>Top:</b>	PU + Micro fiber
<b>Base:</b>	black Nylon + Glass fiber
<b>Size:</b>	290 × 135mm
<b>Weight:</b>	225(CrNi/Ti) gram/pc



## ARIZONA

RB MTB HD S-CM

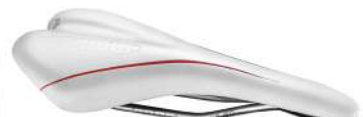
<b>Top:</b>	PU
<b>Base:</b>	black Nylon + Glass fiber
<b>Size:</b>	278 × 135mm
<b>Weight:</b>	284(CrMo) gram/pc



## ARIZONA WHITE

RB MTB HD S-CM

<b>Top:</b>	PU
<b>Base:</b>	black Nylon + Glass fiber
<b>Size:</b>	278 × 135mm
<b>Weight:</b>	284(CrMo) gram/pc





## FOAM

- SL Super-Light foam
- HD High density foam

- GEL w / Gel inlay
- VU Vacuum

## RAIL

- CNT CrNi/Ti rail
- T-CM Two toned CrMo rail
- S-CM Satin CrMo rail

- ST Satin steel rail
- EBR ED black steel rail

### MODANE

RB MTB HD S-CM

**Top:** PU  
**Base:** black Nylon + Glass fiber  
**Size:** 290 × 135mm  
**Weight:** 285(CrMo) gram/pc



### MODANE WHITE

RB MTB HD S-CM

**Top:** PU  
**Base:** black Nylon + Glass fiber  
**Size:** 290 × 135mm  
**Weight:** 285(CrMo) gram/pc



### BRAVURA

MTB HD S-CM

**Top:** PU  
**Base:** black Nylon + Glass fiber  
**Size:** 280 × 135mm  
**Weight:** 280(CrMo) gram/pc



### BRAVURA WHITE

MTB HD S-CM

**Top:** PU  
**Base:** black Nylon + Glass fiber  
**Size:** 280 × 135mm  
**Weight:** 280(CrMo) gram/pc



### ABRUZZO

MTB HD S-CM

**Top:** PU  
**Base:** black Nylon + Glass fiber  
**Size:** 280 × 136mm  
**Weight:** 320(CrMo) gram/pc



### ABRUZZO WHITE

MTB HD S-CM

**Top:** PU  
**Base:** black Nylon + Glass fiber  
**Size:** 280 × 136mm  
**Weight:** 320(CrMo) gram/pc



### ARDÈCHE

RB MTB HD ST

**Top:** Vinyl  
**Base:** black Nylon + Glass fiber  
**Size:** 278 × 135mm  
**Weight:** 354(steel) gram/pc



### PIEMONTE

MTB HD ST

**Top:** Vinyl  
**Base:** black Nylon + Glass fiber  
**Size:** 280 × 136mm  
**Weight:** 360(steel) gram/pc



### JURA

MTB HD ST

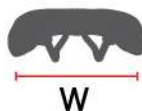
**Top:** Vinyl  
**Base:** black Nylon + Glass fiber  
**Size:** 280 × 135mm  
**Weight:** 320(steel) gram/pc



BIKE

- ATB ATB
- MTB MTB
- RB Road bike
- LB Lady bike

- DB Downhill bike
- CB Commuter bike
- ORB Off road bike
- EB E-bike



3438

RB SL CNT

**Top:** Micro fiber leather  
**Size:** 285 x 125mm  
**Weight:** 199 (CrNi/Ti) gram/pc



3436B

ATB RB HD S-CM

**Top:** PU leather  
**Size:** 295 x 150 mm  
**Weight:** 374 (CrMo) gram/pc



3432

ATB RB SL CNT

**Top:**

- Micro fiber leather + Kevlar black
- High Frequency & hot sealed design

**Size:** 275 x 130mm  
**Weight:** 234 (CrNi/Ti) gram/pc



3430

DB ORB HD S-CM

**Top:**

- Vinyl white
- High Frequency design

**Size:** 280 x 130mm  
**Weight:** 309 (CrMo) gram/pc



3428

RB HD ST

**Top:** PU leather  
**Size:** 293 x 135mm  
**Weight:** 329 (steel) gram/pc



3426

ATB RB HD S-CM

**Top:**

- Kevlar black w/embroidery logo
- With anatomic hole design

**Size:** 275 x 135mm  
**Weight:** 304 (CrMo) gram/pc



3426A

ATB RB T-CM

**Top:**

- Micro fiber leather
- With Frequency & sealed design
- With anatomic hole design

**Size:** 275 x 135mm  
**Weight:** 247 (CrMo) gram/pc



3426C

ATB RB HD S-CM

**Top:** Micro fiber leather  
**Size:** 278 x 135mm  
**Weight:** 284 (CrMo) gram/pc



3851

RB ATB VU ST EBR

**Top:**

- Environmental friendly TPU
- With Frequency & sealed design

**Size:** 245 x 145mm  
**Weight:** 336 (steel) gram/pc



GALIBIER

RB MTB VU CNT or S-CM or EBR

**Top:** PU  
**Base:** black Nylon + Glass fiber  
**Size:** 280 x 125mm  
**Weight:** 235 (CrNi/Ti) or 260 (CrMo) or 300 (steel) gram/pc





**FOAM** (SL) Super-Light foam  
(HD) High density foam

(GEL) w / Gel inlay  
(VU) Vacuum

**RAIL** (CNT) CrNi/Ti Aluminium rail  
(T-CM) Two toned CrMo rail  
(S-CM) Satin CrMo rail

(ST) Satin steel rail  
(EBR) ED black steel rail

### 3178

(ATB) (HD) (S-CM)

**Top:** Micro fiber leather  
**Size:** 274 x 135mm  
**Weight:** 280 (CrMo) gram/pc



### 3170G

(ATB) (HD) (ST)

**Top:** Vinyl  
**Size:** 280 x 136 mm  
**Weight:** 352 (steel) gram/pc



### 3142

(MTB) (HD) (EBR)

**Top:** Vinyl  
**Size:** 246 x 150 mm  
**Weight:** 330 (ED BK steel) gram/pc



### 3132

(MTB) (HD) (EBR)

**Top:** Vinyl  
**Size:** 275 x 143 mm  
**Weight:** 338 (ED BK steel) gram/pc



### SC-50

Aluminium seat clamp

**Material:** cold forged AL 6061, T6  
**Diameter:** ø 28.6 / 31.8 / 34.9mm  
**Color:** black or silver  
**Weight:** 20 gram



### SC-55

Aluminium seat clamp, with stainless steel screw

**Material:** cold forged AL 6061, T6  
**Diameter:** ø 31.8 / 34.9mm  
**Color:** black or silver  
**Weight:** 32 gram



### SC-60

Aluminium seat clamp, with stainless steel screw

**Material:** cold forged AL 6061, T6  
**Diameter:** ø 28.6 / 31.8 / 34.9mm  
**Color:** black  
**Weight:** 21 gram



### SC-65

Aluminium seat clamp, with stainless steel screw

**Material:** cold forged AL 6061, T6  
**Diameter:** ø 31.8 / 34.9mm  
**Color:** black or silver  
**Weight:** 26 gram



### SC-70QR

Aluminium seat clamp, with quick release bolt

**Material:** cold forged AL 6061, T6  
**Diameter:** ø 28.6 / 31.8 / 34.9mm  
**Color:** black or silver  
**Weight:** 51 gram



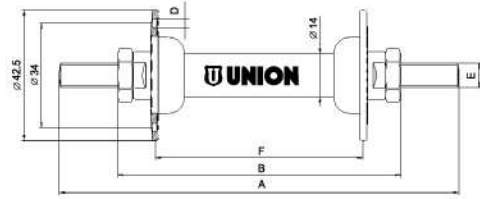
### QR-650

Aluminium Quick Release

**Material:** AL 6061 lever and nut, Cr-Mo skewer  
**Length:** 50mm  
**Color:** black or silver  
**Weight:** 39 gram



## 410

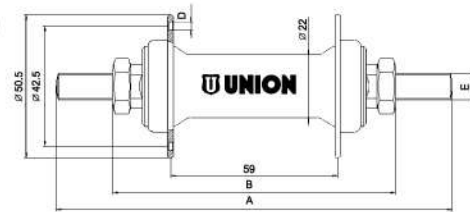


Front hub type	Weight (gram)	Number of spoke holes	A Axle length (Mm)	B Over lock nut dimension (Mm)	Free axle end Right + left (Mm)	D Spoke hole Diameter (Mm)	E Axle thread	F Flange distance (Mm)
w/o nuts								
410-01	153	16	120	80	20	2.8 +/-0.1	5/16" x 26TPI	56.5
410-02	166	16	130	92	19	2.8 +/-0.1	5/16" x 26TPI	56.5
410-03	164	16	130	92	19	2.8 +/-0.1	5/16" x 26TPI	67.5
410-04	163	20	130	92	19	2.8 +/-0.1	5/16" x 26TPI	67.5
410-05	160	36	130	92	19	2.8 +/-0.1	5/16" x 26TPI	67.5
410-06	162	28	130	92	19	2.8 +/-0.1	5/16" x 26TPI	67.5
412-01	195	36	140	100	20	2.8 +/-0.1	3/8" x 26TPI	67.5

## 420

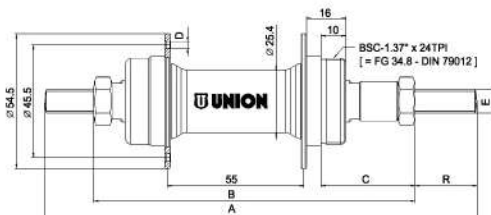


## 420QR



Front hub type	Weight (gram)	Number of spoke holes	A Axle length (mm)	B Over lock nut dimension (mm)	Free axle end right + left (mm)	D Spoke hole diameter (mm)	E Axle thread	F Flange distance (mm)
w/o nuts								
420-01	248	36	140	100	20	2.8 +/-0.1	3/8" x 26TPI	59
with QR								
420-01 QR	267	36	108	100	4	2.8 +/-0.1	3/8" x 26TPI	59

## 463

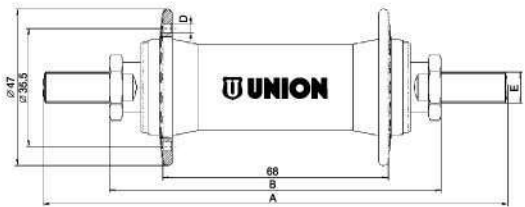


All STEEL hubs also available in black

Rear hub type	Weight (gram)	Number of spoke holes	A Axle length (mm)	B Over lock nut dimension (mm)	C Sprocket clearance (mm)	R Free Axle right (mm)	D Spoke hole diameter (mm)	E Axle thread
w/o nuts								
463-7	370	36	175	130	38	25	2.8 +/-0.1	3/8" x 26TPI
463-7 CrMo	370	36	175	130	38	25	2.8 +/-0.1	3/8" x 26TPI
463-8	372	36	180	135	40	25	2.8 +/-0.1	3/8" x 26TPI
463-8 CrMo	372	36	180	135	40	25	2.8 +/-0.1	3/8" x 26TPI



## 512



## 512QR



Rubber cap



Safety washer



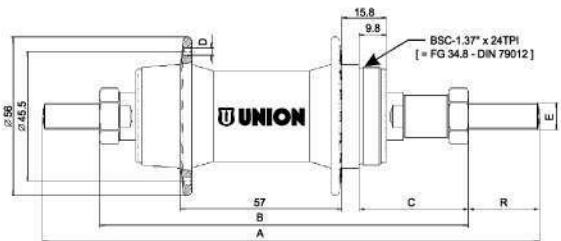
Flange nut



Cap nut 17mm total height

Front hub type	Weight (gram)	Number of spoke holes	A Axle length (mm)	B Over lock nut dimension (mm)	Free axle right (mm)	D Spoke hole diameter (mm)	E Axle thread
512	w/o nuts 176	36	140	100	20	2.9 +/-0.1	3/8" x 26TPI
512 QR	with QR 188	36	108	100	4	2.9 +/-0.1	M9 x 1

## 562



## 562QR



Rubber cap



Flange nut



Cap nut 21mm total height

All ALUMINIUM hubs also available in black (anodized)

Rear hub type	Weight (gram)	Number of spoke holes	A Axle length (mm)	B Over lock nut dimension (mm)	C Sprocket clearance (mm)	R Free axle right (mm)	D Spoke hole diameter (mm)	E Axle thread
562-7	w/o nuts 286	36	175	130	38	25	2.9 +/-0.1	3/8" x 26TPI
562-8	291	36	180	135	40	25	2.9 +/-0.1	3/8" x 26TPI
562-7 QR	with QR 301	36	140	130	38	5	2.9 +/-0.1	M10 x 1
562-8 QR	311	36	145	135	40	5	2.9 +/-0.1	M10 x 1

## E-Bike Lights

### UN-4200E EXTREME E-BIKE

- For use at EPAC (E-Bike) at a Voltage between 6V to 48V DC
- Front light with 1 x LED white
- 80 Lux performance
- Aluminium heat sink in U-shape
- 1+1 INPUT terminal lugs
- Mounting at the front fork, bracket stainless steel



~ K 1738  
IA (E1) 024913

### UN-4270E SPARK E-BIKE

- For use at EPAC (E-Bike) at a Voltage between 6V to 44V DC
- Front light with 1 x LED white
- 50 Lux performance
- 1+1 INPUT terminal lugs
- Mounting at the front fork, bracket stainless steel



~ K 1598  
IA (E1) 024913

### UN-4250E VENTI E-BIKE

- For use at EPAC (E-Bike) at a Voltage between 6V to 44V DC
- Front light with 1 x LED white
- 20 Lux performance
- 1+1 INPUT terminal lugs
- Mounting at the front fork, bracket stainless steel



~ K 990  
IA (E1) 023716

### UN-4930E RETRO 40 E-BIKE

- For use at EPAC (E-Bike) at a Voltage between 6V to 44V DC
- Classic front light with 1 x LED white
- 40 Lux performance
- 1+1 INPUT terminal lugs
- Mounting at the front fork, bracket stainless steel



~ K 1123  
IA (E1) 024005

### UN-4990E CLASSICO E-BIKE

- For use at EPAC (E-Bike) at a Voltage between 6V to 48V DC
- Classic front light with 1 x LED white
- 30 Lux performance
- 1+1 INPUT terminal lugs
- Mounting at the front fork, bracket stainless steel



~ K 1657  
IA (E1) 024592



### UN-4370E

- For use at EPAC (E-Bike) at a Voltage between 6V to 15V DC
- 1 bright red LED and light bar for high luminosity
- Extra wide radiation to the sides >220°
- Transparent lens and durable ABS housing
- 1+1 INPUT terminal lugs
- Base with stainless steel M5 bolt, washer and lock nut



~ K 1326  
IA (E1) 024515

### UN-4350E

- For use at EPAC (E-Bike) at a Voltage between 6V to 15V DC
- 1 bright red LED and light bar for high luminosity
- Extra wide radiation to the sides >220°
- Transparent lens and durable ABS housing
- 1+1 INPUT terminal lugs
- Base with 2 x M5 bolts, for luggage carrier mounting 50/80 mm
- With stainless steel fasteners



### UN-4360E

- For use at EPAC (E-Bike) at a Voltage between 6V to A 15V DC
- 3 red LED and light bar for very bright luminosity
- Extra wide radiation to the sides >220°
- Transparent lens and durable ABS housing
- 1+1 INPUT terminal lugs
- With stainless steel fasteners



~ K 1237  
IA (E1) 024302



- Base with 2 x M5 bolts, for flexible luggage carrier mounting 50/80 mm

### HB-11

- Nylon bracket with swivel (for M6 bolt use)
- With stainless steel bolts and lock nuts (black)



### HA-1

- Nylon adapter for SUNTOUR: CR8, CR85-E25, NCX, NEX, NEX-E25 and for ZOOM
- With stainless steel bolt and lock nut (black)



### HA-2

- Nylon adapter for SUNTOUR: MOBIE, NCX 32, NEX-E25-C, NVX, XCM-32-ATB, XCR-32-ATB
- With stainless steel bolt and lock nut (black)



### HA-6

- Nylon adapter for RST
- With stainless steel bolt and lock nut (black)



## Headlights: 6 Volt / 2.4 Watt

### UN-4920 RETRO 20

- Classic front light with 1 x LED white
- 20 Lux performance
- For use with side dynamo
- With 2+2 INPUT and OUTPUT terminal lugs
- Mounting on front fork, bracket stainless steel



### UN-4925 RETRO 20 ON/OFF

- Like RETRO 20 (UN-4920), with on/off switch
- For use with hub dynamo
- With 2+2 INPUT and OUTPUT terminal lugs



### UN-4926 RETRO 20 STEADY

- Like RETRO 20 ON/OFF (UN-4925)
- With "battery free" standlight function

### UN-4928 RETRO 20 STEADY SENSOR

- Like RETRO 20 STEADY (UN-4926), with on/auto/off switch
- With automatic ON/OFF mode

### UN-4930 RETRO 40

- Classic front light with 1 x LED white
- 40 Lux performance
- For use with side dynamo
- With 2+2 INPUT and OUTPUT terminal lugs
- Mounting on front fork, bracket stainless steel



### UN-4935 RETRO 40 ON/OFF

- Like RETRO 40 (UN-4930), with on/off switch
- For use with hub dynamo
- With 2+2 INPUT and OUTPUT terminal lugs

~ K 1123  
IA (E1) 024005

### UN-4936 RETRO 40 STEADY

- Like RETRO 40 ON/OFF (UN-4935)
- With "battery free" standlight function



### UN-4938 RETRO 40 STEADY SENSOR

- Like RETRO 40 STEADY (UN-4936), with on/auto/off switch
- With automatic ON/OFF mode



### UN-4965 MOBILE

- Front light with 1 x LED white, and on/off button at the top
- For use with hub dynamo, with fixed twin cable
- Mounting on front fork, bracket stainless steel



### UN-4990 CLASSICO

- Classic front light with 1 x LED white
- 30 Lux performance
- For use with side dynamo, with fixed input twin cable
- 1+1 terminal lugs for optional tail light connection
- Mounting at the front fork, bracket stainless steel



### UN-4995 CLASSICO ON/OFF

- Like CLASSICO (UN-4990), with on/off switch
- For use with hub dynamo, with fixed input twin cable
- 1+1 terminal lugs for tail light connection



### UN-4996 CLASSICO STEADY

- Like CLASSICO ON/OFF (UN-4995)
- With "battery free" stand light function



### UN-4965+ MOBILE PLUS

- Front light with 1 x high power LED and on/off button at the top
- 10 Lux performance
- For use with hub dynamo, with fixed twin cable
- Mounting on front fork, bracket stainless steel



### UN-4220

- Durable ABS housing
- HALOGEN bulb
- 1+1 plug-on contact for secure twin-cable connection
- Base with serration washer and ground contact



### UN-4225

- Like UN-4220, with additional ON-OFF switch for use with hub dynamo
- 1+1 lugs for twin-cable connection to dynamo and 1+1 terminal lugs for taillight connection







~ K 1598  
IA (E1) 024913

### UN-4275 SPARK ON/OFF

- Front light with 1 x LED white
- 50 Lux performance
- With on/off switch, for use, with hub dynamo
- 2+2 INPUT and OUTPUT terminal lugs
- Mounting at the front fork, bracket stainless steel

### UN-4276 SPARK STEADY

- Like SPARK ON/OFF (UN-4275)
- With "battery free" stand light function

### UN-4278 SPARK STEADY SENSOR

- Like SPARK STEADY (UN-4276), with on/auto/off switch
- With automatic ON/OFF mode



~ K 1738  
IA (E1) 024913

### UN-4205 EXTREME ON/OFF

- Front light with 1 x LED white
- 80 Lux performance
- Aluminium heat sink in U-shape
- With on/off switch, for use with hub dynamo
- 2+2 INPUT and OUTPUT terminal lugs
- Mounting at the front fork, bracket stainless steel

### UN-4206 EXTREME STEADY

- Like EXTREME ON/OFF (UN-4205)
- With "battery free" stand light function

### UN-4208 EXTREME STEADY SENSOR

- Like EXTREME STEADY (UN-4206), with on/auto/off switch
- With "battery free" stand light function

### UN-4250 VENTI

- Front light with 1 x LED white
- 20 Lux performance
- For use with side dynamo
- With 1+1 INPUT terminal lugs
- Mounting on front fork, bracket stainless steel



~ K 990  
IA (E1) 023716

### UN-4255 VENTI ON/OFF

- Like VENTI (UN-4250), with on/off switch
- For use with hub dynamo, with fixed twin cable, 60 cm
- With 1+1 terminal lugs for tail light connection



### UN-4256 VENTI STEADY

- Like VENTI ON/OFF (UN-4255)
- With "battery free" stand light function

### UN-4258 VENTI STEADY SENSOR

- Like VENTI STEADY (UN-4256), with on/auto/off switch
- With automatic ON/OFF mode

### UN-4290 LUPA

- Front light with 1 x LED white
- 30 Lux performance
- For use with side dynamo
- 2+2 INPUT and OUTPUT terminal lugs, for optional tail light connection
- Mounting at the front fork, bracket stainless steel

### UN-4295 LUPA ON/OFF

- Like LUPA (UN-4290), with on/off switch
- For use with hub dynamo
- 2+2 INPUT and OUTPUT terminal lugs

### UN-4260 HILUX

- Front light with 1 x LED white
- 35 Lux performance
- For use with side dynamo
- With 1+1 INPUT terminal lugs
- Mounting on front fork, bracket stainless steel



~ K 836  
IA (E1) 023273

### UN-4265 HILUX ON/OFF

- Like HILUX (UN-4260), with on/off switch
- For use with hub dynamo, with fixed twin cable, 60 cm
- With 1+1 terminal lugs for taillight connection



### UN-4266 HILUX STEADY

- Like HILUX ON/OFF (UN-4265)
- With "battery free" stand light function

### UN-4268 HILUX STEADY SENSOR

- Like HILUX STEADY (UN-4266), with on/auto/off switch
- With automatic ON/OFF mode



### UN-4296 LUPA STEADY

- Like LUPA ON/OFF (UN-4295)
- With "battery free" stand light function

~ K 1657  
IA (E1) 024592

### UN-4298 LUPA STEADY SENSOR

- Like LUPA STEADY (UN-4296) with on/auto/off switch
- With automatic ON/OFF mode

## Rear Lights: 6 Volt

### UN-4370

- 1 red LED and light bar for bright luminosity
- Extra wide radiation >220°
- Transparent lens and durable ABS housing
- 1+1 INPUT terminal lugs
- Base with stainless steel M5 bolt, washer and lock nut

### UN-4375

- Like UN-4370
- With additional "battery free" stand light function, powered by capacitor



~ K 1326 IA (E1) 024515

### UN-4360

- 3 red LED and light bar for very bright luminosity
- Extra wide radiation to the sides >220°
- Transparent lens and durable ABS housing
- 1+1 INPUT terminal lugs
- Base with 2 x M5 bolts, for luggage carrier mounting 50/80 mm
- With stainless steel fasteners

### UN-4365

- Like UN-4360
- With additional "battery free" stand light function, powered by capacitor



~ K 1237 IA (E1) 024302

### UN-4350

- 1 bright red LED and light bar for high luminosity
- Extra wide radiation to the sides >220°
- Transparent lens and durable ABS housing
- 1+1 INPUT terminal lugs
- Base with 2 x M5 for luggage carrier mounting 50/80 mm
- With stainless steel fasteners

### UN-4355

- Like UN-4350
- With additional "battery free" stand light function, powered by capacitor



### UN-4340

- 1 bright red LED for extra wide radiation >220°
- Transparent lens
- Durable ABS housing
- 1+1 clamp contact
- Base with 2 x M5 bolt, for luggage carrier mounting 50/80mm

### UN-4345

- Like UN-4340
- With additional "battery free" stand light function, powered by capacitor



~ K 694

### UN-4320

- 3 red LED for >220° radiation
- Transparent lens
- Durable ABS housing
- 1+1 clamp contact
- Base with M 5 bolt, for easy mudguard mounting

### UN-4325

- Like UN-4320
- With additional "battery free" stand light function, powered by capacitor



~ K 693

## Dynamos: 6 Volt / 3 Watt

### UN-4105

- Efficiency more than 35%
- Release lever for easy operating
- Durable nylon pulley
- 1+1 clamp contact for twin-cable
- Zinc plated bracket with serration washer
- RIGHT- and LEFT- side type
- Maintenance free
- Weight : 147g



~ K 386

### UN-4190

- Efficiency more than 35%
- Sintered steel bearings
- Serrated steel pulley
- 1+1 clamp contact for twin-cable
- Zinc plated bracket with serration washer
- RIGHT- and LEFT- side type
- Maintenance free
- Weight : 202g



### UN-4125

- Efficiency more than 35%
- Release lever for easy operating
- Durable rubber pulley
- 2+2 plug-on contacts for twin-cable
- Zinc plated bracket + serration washer
- RIGHT- and LEFT- side type available
- Maintenance free
- Weight : 150g



~ K 386

### UN-4195

- Efficiency more than 35%
- Sintered steel bearings
- Durable rubber pulley
- 1+1 clamp contact for twin-cable
- Zinc plated bracket + serration washer
- RIGHT- and LEFT- side type available
- Maintenance free
- Weight : 148g



~ K 386



## LED Headlights

### UN-4980 CLASSICO BATTERY

- Front light with 1 x LED white, with on/off button at the top
- 20 Lux performance
- Batteries : 4 x AAA alkaline, included and assembled
- Mounting at the front fork, bracket stainless steel



~ K 1374  
IA (E1) 024592

### UN-4280 LUPA BATTERY

- Front light with 1 x LED white, with on/off button at the top
- 20 Lux performance
- Batteries : 4 x AAA alkaline, included and assembled
- Mounting at the front fork, bracket stainless steel



~ K 1374  
IA (E1) 024592

### UN-4915 RETRO BATTERY

- Classic front light with 1 x LED white
- 20 Lux performance
- With on/off button at the top
- Batteries : 4 x AAA alkaline, included and assembled
- Mounting on front fork, bracket stainless steel



~ K 1122  
IA (E1) 024005

### UN-4240 VENTI BATTERY

- Front light with 1 x LED white, with on/off button at the top
- 20 Lux performance
- Batteries : 4 x AAA alkaline, included and assembled
- Mounting on front fork, bracket stainless steel



### UN-4245 VENTI BATTERY SENSOR

- Like VENTI BATTERY (UN-4240)
- With automatic ON/OFF mode

~ K 1196  
IA (E1) 024188

### UN-4960 MOBILE BATTERY

- Front light with 1 x LED white and on/off button at the top
- Batteries : 2 x AA alkaline, included and assembled
- Mounting on front fork, bracket stainless steel



black/black



white/white



IA (E1) 023511

### UN-4960+ MOBILE PLUS BATTERY

- Front light with 1 x high power LED, with two modes (low / high) by push button at the top
- 10 Lux in high mode / 5 Lux in low mode
- Batteries : 2 x AA alkaline, included and assembled
- Mounting on front fork, bracket stainless steel



black/black



IA (E1) 023511

### UN-4900

- Front light with 3 x LED white, with on/off button at the top
- Batteries : 3 x AAA alkaline, included and assembled
- Mounting on handlebar stem bracket
- ABS-housing, available in black and chrome



### UN-4900 STAINLESS STEEL & RETRO REFLECTOR

- Like UN-4900, with lamp holder in stainless steel
- With retro reflector in ring design
- ABS-housing, available in black and chrome



### UN-4800

- Front light with 1 x LED white and on/off button at the front
- 10 Lux performance
- Batteries : 3 x AAA alkaline, included and assembled
- Mounting at the front fork, bracket stainless steel



### UN-4955

- Classic LED front light, downsized
- With on/off button at the top and 1 x high power LED white
- Batteries : 2 x AAA alkaline, included and assembled
- Various mounting opportunities, bracket flange stainless steel



## LED rear lights

### UN-4470

- 1 red LED and light bar for bright luminosity
- Extra wide radiation >220°
- Transparent lens and durable ABS housing
- Batteries: 2 x AAA, included and assembled
- On/off switch at the back side
- Base with M5 bolt
- With stainless steel fasteners

### UN-4475

- Like UN-4470, with 1 red LED and light bar
- With automatic ON/OFF mode



~ K 1326  
IA (E1) 024515

### UN-4460

- 3 red LED and light bar for very bright luminosity
- Extra wide radiation to the sides >220°
- Transparent lens and durable ABS housing
- Batteries: 2 x AA, included and assembled
- On/off button at the side
- Base with 2 x M5 bolts, for luggage carrier mounting 50/80 mm
- With stainless steel fasteners



### UN-4465

- Like UN-4460, with 3 red LED and light bar
- With automatic ON/OFF mode



~ K 1237  
IA (E1) 024302

### UN-4450

- 1 bright red LED and light bar for high luminosity
- Extra wide radiation to the sides >220°
- Transparent lens and durable ABS housing
- Batteries: 2 x AAA alkaline, included and assembled
- On/off switch at the side
- Base with 2 x M5 for luggage carrier mounting 50/80 mm
- With stainless steel fasteners



### UN-4430

- Rear carrier light with 2 x LED red and light bar, with on/off switch at the bottom
- Batteries: 2 x AA alkaline, included and assembled
- Mounting on rear carrier with pitch 80mm (alternative 50mm)
- With stainless steel fasteners



IA (E1) 023409

### UN-4420

- Rear carrier light with 3 x LED red, with on/off switch
- Batteries: 2 x AA alkaline, included and assembled
- Mounting on rear carrier with pitch 80mm (alternative 50mm)
- With stainless steel fasteners



IA (E1) 023349

### UN-4400

- Rear carrier light with 2 x LED red in SMD technology and additional lenses, with on/off switch
- Batteries: 2 x AA alkaline, included and assembled
- Mounting on rear carrier with pitch 80mm (alternative 50mm)



IA (E1) 024515

### UN-4309

- Rear mudguard light with 1 x LED red, with on/off switch at the back side
- Extra water resistant
- Batteries: 2 x AAA alkaline, included and assembled
- Stainless steel fasteners, including lock nut
- Mounting on rear mudguard
- With smoke glass

### UN-4307

- Rear mudguard light with 1 x LED red, with on/off switch at the back side
- Extra water resistant
- Batteries: 2 x AAA alkaline, included and assembled
- Stainless steel fasteners, including lock nut
- Mounting on rear mudguard
- With smoke glass



IA (E1) 023408



## Li-Ion Battery Lights



### UN-100 \*\*

- Front light LED
- Direct USB adapter
- Steady + flash
- Burning time 2.5 HRS

\*\*Also available in a set as UN-102



### UN-101 \*\*

- Tail light LED
- Direct USB adapter
- Steady + flash
- Burning time 2.5 HRS



### UN-120

- Tail light LED (2 x LED)
- Incl. micro USB charging cable
- Steady + flash
- Adjustable rubber quick release
- Burning time 6 HRS



### UN-130

- Tail light LED (2 x LED)
- Incl. USB 2.0 charging cable
- Bracket system with finger screw
- Steady + flash + steady 50%
- Burning time 4 HRS



### UN-150

- Front light LED
- 2 x LED (2 LUX)
- Incl. micro USB charging cable
- Steady + flash
- Adjustable rubber quick release
- Burning time 6 HRS



### UN-160

- Front light LED
- 2 x LED (4 LUX)
- Incl. USB 2.0 charging cable
- Bracket system with finger screw
- Black version with handlebar and V-brake bracket
- Steady + flash + steady 50%
- Burning time 4 HRS



### UN-170

- Front light LED
- 1 x LED (30 LUX)
- Incl. USB 2.0 charging cable
- Bracket system with finger screw
- With handlebar and V-brake bracket
- Steady + flash + steady 50%
- Burning time 4 HRS



### UN-200 25 LUX USB HEADLIGHT \*\*

- Rechargeable Li-Ion battery (3.7V, 500mAh)
- Incl. USB 2.0 charging cable
- Low-battery indicator
- USB charging port protected against splash and rainwater by a rubber cap
- Incl. adjustable rubber handlebar bracket that fits all handlebars
- Steady 100% + Steady 50%
- Lightweight :46 gram
- Approved according StVZO regulation
- 25 LUX light intensity, luminous range 90 meter
- Burning time 4 HRS
- Charging time of 1,5 hours



### UN-220



### UN-210 USB TAILLIGHT \*\*

- Rechargeable Li-Ion battery (3.7V, 150mAh)
- Incl. USB 2.0 charging cable
- Low-battery indicator
- USB charging port protected against splash-and rainwater by replaceable rubber seat post adapter
- Incl. adjustable rubber seat post adapter that fits most seat posts
- Steady 100%
- Lightweight :41 gram
- Approved according StVZO regulation
- Horizontal radiation angle of 220°
- Burning time 4 HRS
- Charging time of 2 hours

\*\* Also available in a set as UN-220



### UNION-5N / 8N-SILVER

- UNION-N cycle computer with silver coloured housing
- Available with 5- and 8- functions with wire (dark grey inner panel)



### UNION-5N / 8N-BLACK

- UNION-N cycle computer with black coloured housing
- Available with 5- and 8- functions with wire (black inner panel)



### UNION-5 / 8 / 10

- UNION cycle computer with titanium coloured housing
- Available with 5-, 8- and 10- functions with wire



### UNION-9W

- UNION cycle computer with titanium coloured housing
- Available with 9- functions wireless

MODEL	UNION-5N UNION-5	UNION-8N UNION-8	UNION-10	UNION-9W
FUNCTION				
Current speed	✓	✓	✓	✓
Average speed		✓	✓	✓
Maximum speed		✓	✓	✓
Trip distance	✓	✓	✓	✓
Odometer	✓	✓	✓	✓
Distance/ day				✓
Auto scan	✓	✓	✓	✓
Speed pacer			✓	
Riding time		✓	✓	✓
Total riding time			✓	
12 hours clock	✓	✓	✓	
12/24 hours clock				✓
<b>FEATURES</b>				
With wire	✓	✓	✓	
Wireless				✓
Auto ON/OFF				✓

- 8 models of high quality computers
- Two years of full guarantee
- All computers packed in blister-panelbox
- Exclusive housing designs
- Special handlebar bracket
- Assembly instructions and user manual in 10 languages
- Easy installment



## Headset Tool

**BT-301**  
Headset wrench  
30-32mm x 36-40mm



## Hub Cone Tool

**BT-310**  
Hub cone wrench  
13-15mm x 14-16mm  
(set of 2 pieces)



## Bottom Bracket Tool

**BT-630**  
Cartridge bottom bracket  
tool (Shimano-type)



## Tire Lever

**BT-850**  
Tire lever set (nylon / fiberglass reinforced)



## Freewheel and Cassette Tools

**BT-410**  
Freewheel remover for Shimano HG20



**BT-420**  
Cassette sprocket locking tool with  
stabilizer (Shimano-type)



**BT-440**  
Cassette sprocket locking tool (Shimano-type)



**BT-490**  
Freewheel turner (chainwhip)



## Spoke Tools

**BT-127**  
Spoke wrench for 0,127"  
nipples (DT Swiss &  
Wheelsmith)



**BT-136**  
Spoke wrench for 0,136"  
nipples (Asian nipples)



**BT-130**  
Spoke wrench for 0,130"  
nipples (European nipples)



**BT-139**  
Spoke wrench 3-in-1  
(for all nipples)



## Crank Tools

### **BT-510**

Cotterless crank extractor (14mm)



### **BT-520**

Cotterless crank extractor with wrench (all axles)



## Chain Tools

### **BT-710**

Chain rivet extractor (fits all chains)



### **BT-750**

Chain rivet extractor Cr-Mo steel (fits all chains)



## Cleaning Tools

### **BT-780**

Chain scrubber with solvent reservoir and bristles



### **BT-860**

Derailleur and chain scrubber



## Workshop Stand

### **BT-999**

Aluminium workshop stand  
Completely foldable  
Bicycle can be fixed under any angle (360°)



## Folding Tool

### **BT-950**

Folding tool with 9 functions



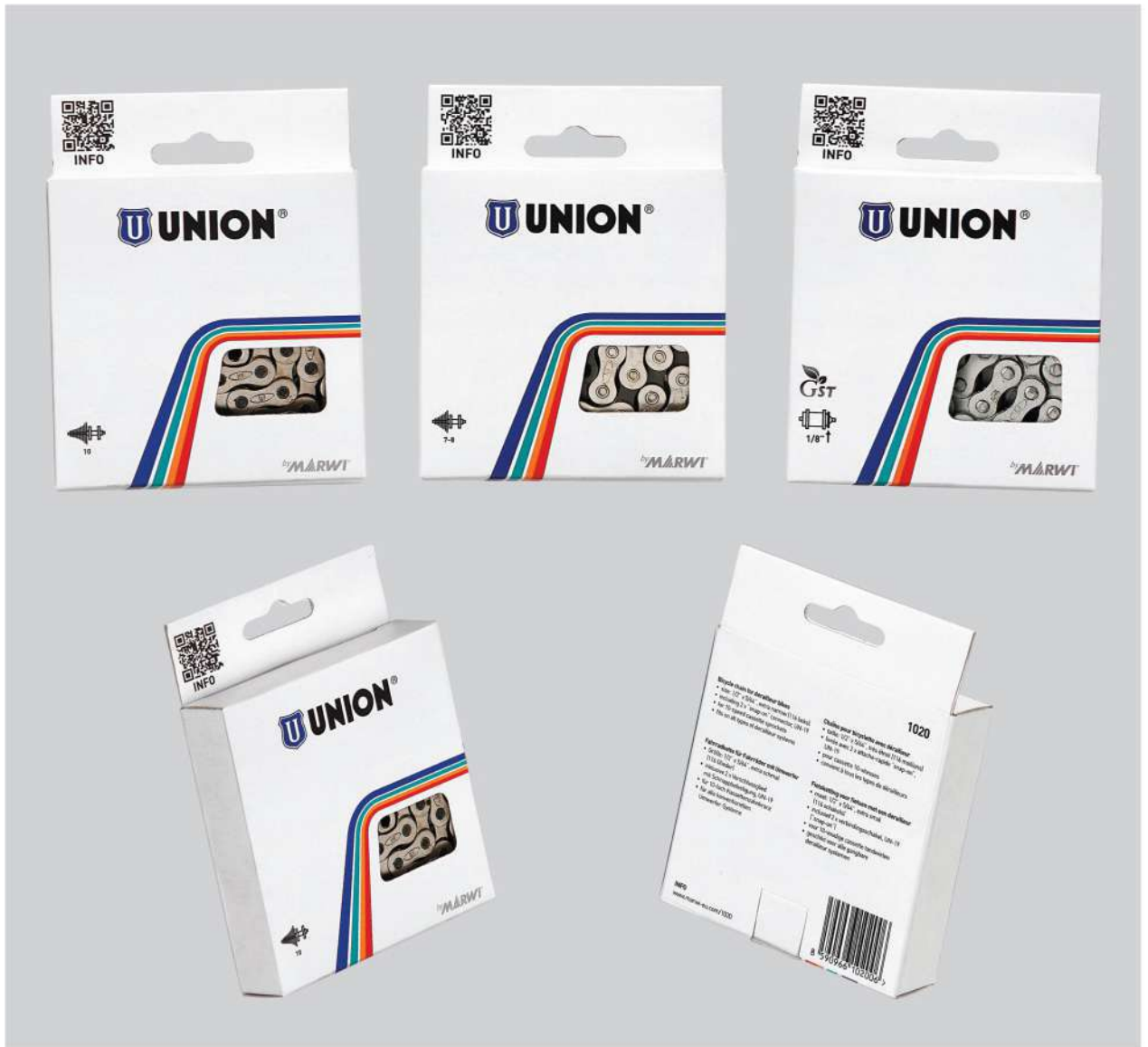
## Pedal Tools

### **BT-015**

Pedal wrench







- Full range of high quality bicycle chains
- Type tested and certificated by German TÜV Product Service
- Two years warranty
- All chains packed in a compact panelbox with euroslot

- All panelboxes include connector for tool-free assembly
- All panelboxes carry BAR code
- QR-code for easy access to product information
- 3 models with special GST coating for supreme anti-rust protection



**step 1**  
To connect the Sigma Connector, hold the inner plate ends of the chain in both hands and insert the connecting link.



**step 2**  
Now that one side of the Sigma Connector is inserted, place the outer connector plate on one pin, then place your thumbs over the outside plate and both pins. Gently flex the chain by pushing with thumbs until the outside connector plate snaps into position over the second pin.



**step 3**  
Make sure the plates are parallel to each other and plate is fully seated in the pin channel. Note: If the outside connector plate is not seated in the channel, the plate may fall off.



**Disassembly :**  
With the connector plate facing you, grasp the chain 4 to 5 links away from the connector and flex the chain by pushing with your thumbs. The link disconnects and the connector can be removed.





resists > 300hrs. salt spray test

	Type	Art.nr.	Size	Length	Finish	Design	Tensile strength	Compatibility	Extra feature	Connector
	747	390190	1/2"×1/8"	112 links	black	bush-type roller chain	>920 KGS	coaster brake	-	1 set UN-01 included
	410H	390410	1/2"×1/8"	112 links	black	bush-less	>920 KGS	single speed and gear hub 1/8"	-	1 set UN-33 included
	410H-AR	390415	1/2"×1/8"	112 links	titanium-grey with black pins	bush-less	>920 KGS	single speed and gear hub 1/8"		1 set UN-33 in GST grey included
	430H	390430	1/2"×3/32"	112 links	black	bush-less	>1020 KGS	gear hub 3/32" and non-index	-	1 set UN-25 included
	430H-AR	390435	1/2"×3/32"	112 links	titanium-grey with black pins	bush-less	>1020 KGS	gear hub 3/32"		1 set UN-25 in GST grey included
	710	390710	1/2"×3/32"	116 links	black	bush-less	>1020 KGS	5-/6-/7-speed index UG	-	1 set UN-23 included
	810	390810	1/2"×3/32"	116 links	black	bush-less	>1020 KGS	7-/8-speed IG/HG	Inner chamfer on inner plates	1 set UN-23 included

	Type	Art.nr.	Description	Application	Quantity	Size	Finish
	UN-01	390001	Spring clip connector Use standard plier Fits all chain brands	1/2"×1/8" bush-type coaster brake chain	2 sets on card or 500 in bulk	1/2"×1/8"	black
	UN-33	390033	Sigma connector No tools required Fits all chain brands	1/2"×1/8" chain for gear hub or single speed	2 sets on card or 500 in bulk	1/2"×1/8"	black
	UN-25	390025	Sigma connector No tools required Fits all chain brands	1/2"×3/32" chain for gear hub	2 sets on card or 500 in bulk	1/2"×3/32"	black
	UN-23	390023	Sigma connector No tools required Fits all chain brands	1/2"×3/32" derailleur chain 5-/6-/7-8-speed	2 sets on card or 500 in bulk	1/2"×3/32"	black/silver
	UN-20	390020	Sigma connector No tools required Fits all chain brands	1/2"×5/64" derailleur chain 9-speed	2 sets on card or 500 in bulk	1/2"×5/64"	silver





**GH-001**  
fits various brands



**GH-002**  
fits various brands



**GH-003**  
fits various brands



**GH-005**  
fits various brands



**GH-006**  
fits various brands



**GH-009**  
fits various brands



**GH-010**  
fits various brands



**GH-011**  
fits various brands



**GH-012**  
fits various brands



**GH-013**  
fits various brands



**GH-014**  
fits various brands



**GH-015**  
fits various brands



**GH-017**  
fits various brands



**GH-018**  
fits various brands



**GH-020**  
fits various brands



**GH-021**  
fits Giant and others



**GH-022**  
fits various brands



**GH-023**  
fits various brands



**GH-026**  
fits various brands



**GH-027**  
fits various brands



**GH-029**  
fits various brands



**GH-033**  
fits various brands



**GH-036**  
fits various brands



**GH-038**  
fits various brands



**GH-039**  
fits various brands



**GH-041**  
fits various brands



**GH-043**  
fits various brands



**GH-045**  
fits various brands



**GH-049**  
fits various brands



**GH-051**  
fits various brands



**GH-056**  
fits various brands



**GH-057**  
fits various brands



**GH-058**  
fits various brands



**GH-059**  
fits various brands



**GH-060**  
fits various brands



**GH-061**  
fits various brands



**GH-062**  
fits various brands



**GH-063**  
fits various brands



**GH-068**  
fits Trek and others



**GH-069**  
fits various brands



**GH-072**  
fits various brands



**GH-075**  
fits various brands



**GH-076**  
fits various brands



**GH-078**  
fits various brands



**GH-080**  
fits various brands



**GH-081**  
fits various brands



**GH-082**  
fits various brands



**GH-083**  
fits Specialized (road)



**GH-084**  
fits Specialized (MTB)



**GH-085**  
fits Cube



**GH-086**  
fits Specialized



**GH-087**  
fits various brands



**GH-088**  
fits various brands



**GH-089**  
fits Specialized



**GH-090**  
fits Felt



**GH-092**  
fits Bianchi



**GH-093**  
fits various brands



**GH-094**  
fits Specialized



**GH-095**  
fits Marin



**GH-096**  
fits Marin



**GH-097**  
fits Corratec and others



**GH-098**  
fits KTM



**GH-099**  
fits KTM



**GH-100**  
fits various brands



**GH-101**  
fits various brands



**GH-102**  
fits various brands



**GH-103**  
fits various brands



**GH-104**  
fits various brands



**GH-105**  
fits various brands



**GH-106**  
fits various brands



**GH-107**  
fits various brands



**GH-108**  
fits Cannondale





**GH-109**  
fits Cannondale



**GH-110**  
fits Giant



**GH-111**  
fits Trek



**GH-112**  
fits Trek



**GH-113**  
fits Trek and others



**GH-114**  
fits various brands



**GH-115**  
fits various brands



**GH-116**  
fits various brands



**GH-117**  
fits various brands



**GH-118**  
fits various brands



**GH-119**  
fits various brands



**GH-120**  
fits Scott



**GH-121**  
fits various brands



**GH-122**  
fits various brands



**GH-123**  
fits various brands



**GH-124**  
fits various brands



**GH-125**  
fits Cannondale



**GH-126**  
fits various brands



**GH-127**  
fits various brands



**GH-128**  
fits various brands



**GH-129**  
fits various brands



**GH-130**  
fits various brands



**GH-131**  
fits various brands



**GH-132**  
fits Felt and others



**GH-133**  
fits various brands



**GH-134**  
fits Giant



**GH-135**  
fits Giant



**GH-136**  
fits Giant



**GH-137**  
fits Trek



**GH-138**  
fits Trek



**GH-139**  
fits Trek



**GH-140**  
fits Specialized



**GH-141**  
fits Specialized



**GH-142**  
fits Specialized



**GH-143**  
fits Specialized



**GH-144**  
fits GT



**GH-145**  
fits various brands



**GH-146**  
fits various brands



**GH-147**  
fits Cervelo, Eddy Merckx



**GH-148**  
fits Cannondale



**GH-149**  
fits Cannondale



**GH-150**  
fits Cannondale



**GH-151**  
fits Cannondale



**GH-152**  
fits Eddy Merckx



**GH-153**  
fits various brands



**GH-154**  
fits various brands



**GH-155**  
fits Orbea



**GH-156**  
fits Scott



**GH-157**  
fits Scott



**GH-158**  
fits Cervelo



**GH-159**  
fits Specialized



**GH-160**  
fits Cannondale



**GH-161**  
fits Trek



**GH-162**  
fits Lapierre, Koga



**GH-163**  
fits Scott



**GH-164**  
fits Cube



**GH-165**  
fits Cube



**GH-166**  
fits Specialized



**GH-167**  
fits Lapierre, Ghost



**GH-168**  
fits Lapierre



**GH-169**  
fits Ghost



**GH-170**  
fits Ghost



**GH-171**  
fits Ghost



**GH-172**  
fits Ghost



**GH-173**  
fits Ghost, Koga



**GH-174**  
fits Ghost, Koga



**GH-175**  
fits Cube



**GH-176**  
fits Cube



**GH-177**  
fits Cube



**GH-178**  
fits Bergamont



**GH-179**  
fits Stevens



**GH-180**  
fits Stevens, Kuota





**GH-181**  
fits Scott



**GH-182**  
fits Scott



**GH-183**  
fits Giant



**GH-184**  
fits Giant



**GH-185**  
fits Giant



**GH-186**  
fits Giant



Pitch  
1,50

**GH-187**  
fits various brands



**GH-188**  
fits Trek



**GH-189**  
fits Trek



**GH-190**  
fits Trek



**GH-191**  
fits Giant



**GH-192**  
fits Cannondale



Pitch  
1,75

**GH-199**  
fits KTM



**GH-200**  
fits various brands



**GH-201**  
fits Cube



**GH-202**  
fits various brands



**GH-203**  
fits Stevens, BMC



**GH-204**  
fits Focus



**GH-205**  
fits Fuji



**GH-206**  
fits Cannondale



**GH-207**  
fits Cervelo



**GH-208**  
fits Colnago



**GH-209**  
fits Willer and others



**GH-210**  
fits Bulls and others



**GH-211**  
fits BH and others



**GH-212**  
fits Scott



**GH-213**  
fits various brands



**GH-214**  
fits Focus



**GH-215**  
fits Focus



**GH-216**  
fits Focus



**GH-217**  
fits Scott



**GH-218**  
fits Lapierre



**GH-219**  
fits various brands



**GH-220**  
fits various brands



**GH-221**  
fits Lapierre



**GH-222**  
fits Lapierre



**GH-223**  
fits Lapierre



**GH-224**  
fits Haibike



**GH-225**  
fits Trek



**GH-226**  
fits BMC



**GH-227**  
fits Bergamont



**GH-228**  
fits Fuji



**GH-229**  
fits Focus and others



**GH-230**  
fits BMC



**GH-231**  
fits Pinarello



**GH-232**  
fits Felt



**GH-233**  
fits Giant



**GH-234**  
fits Willer



**GH-235**  
fits Giant



**GH-236**  
fits Ghost



**GH-237**  
fits BMC



**GH-238**  
fits various brands



**GH-239**  
fits various brands



**GH-240**  
fits various brands



**GH-241**  
fits various brands



**GH-242**  
fits various brands



**GH-243**  
fits BH



**GH-244**  
fits various brands



**GH-245**  
fits various brands



**GH-246**  
fits KTM



**GH-247**  
fits KTM



**GH-248**  
fits KTM



Pitch  
1,75

**GH-249**  
fits Bulls



Pitch  
1,50

**GH-250**  
fits Bulls



Pitch  
1,75

**GH-251**  
fits Bulls



Pitch  
1,50

**GH-252**  
fits Bulls



**GH-253**  
fits Bulls



**GH-254**  
fits Bulls



**GH-255**  
fits Bulls



**GH-256**  
fits Orbea



**GH-257**  
fits Cube



**GH-258**  
fits Stevens, Corratec





**GH-259**  
fits Giant



**GH-260**  
fits Cannondale



**GH-261**  
fits Giant



**GH-262**  
fits BH



**GH-263**  
fits Bulls



**GH-264**  
fits Cube



**GH-265**  
fits Orbea



**GH-266**  
fits Focus



**GH-267**  
fits Focus



**GH-268**  
fits Decathlon



**GH-269**  
fits Stevens



**GH-270**  
fits Canyon



**GH-271**  
fits Bergamont



**GH-272**  
fits Bergamont



**GH-273**  
fits Bergamont



**GH-274**  
fits Orbea



**GH-275**  
fits Scott



**GH-276**  
fits Scott



**GH-277**  
fits Scott



**GH-278**  
fits Scott



**GH-279**  
fits Stevens



**GH-280**  
fits Stevens



**GH-281**  
fits Scott



**GH-282**  
fits Orbea



**GH-283**  
fits GT



**GH-284**  
fits GT



**GH-285**  
fits Cube



**GH-286**  
fits Cube



**GH-287**  
fits Cube



**GH-288**  
fits Cube



**GH-289**  
fits Focus



**GH-290**  
fits Focus



**GH-291**  
fits Focus



**GH-292**  
fits Scott



**GH-293**  
fits Specialized



**GH-294**  
fits Specialized



**GH-295**  
fits Specialized



**GH-296**  
fits Specialized



**GH-297**  
fits Specialized



**GH-299**  
fits Haibike



**GH-300**  
fits Haibike



**GH-301**  
fits Haibike & others



**GH-302**  
fits Specialized



**GH-298**  
fits Specialized



**GH-303**  
fits Cannondale



**GH-304**  
fits Rose



**GH-305**  
fits Canyon



**GH-306**  
fits Haibike



**GH-307**  
fits Stevens



**GH-308**  
fits Stevens



**GH-309**  
fits Focus



**GH-310**  
fits Giant



**GH-311**  
fits Cube



**GH-312**  
fits Stevens, Felt, Kona



**GH-399**  
Universal Gear Hanger-compatible  
with SRAM UDH  
fits Bulls, Canyon, Conway, Cube,  
Focus, Lapierre, Merida, Scott,  
Specialized, Trek and others







### BOX TOP-20

Assortment box with the 20 most sold gear hangers (1 pc. each), fitting frames for hundreds of bike brands.

#### CONTENT:

GH-001 GH-002 GH-003  
 GH-005 GH-006 GH-009  
 GH-010 GH-011 GH-012  
 GH-013 GH-014 GH-015  
 GH-017 GH-018 GH-020  
 GH-022 GH-023 GH-029  
 GH-033 GH-039



### BOX TOP 21-40

Assortment box with another 20 common gear hangers (1 pc. each), fitting frames for many different bike brands.

#### CONTENT:

GH-021 GH-026 GH-036  
 GH-043 GH-045 GH-056  
 GH-058 GH-068 GH-080  
 GH-106 GH-107 GH-114  
 GH-116 GH-117 GH-119  
 GH-124 GH-126 GH-128  
 GH-130 GH-131



### BOX SPECIALS

Assortment box with the 20 special hangers fitting the latest frames of Cannondale, Specialized, Trek and Giant

#### CONTENT:

GH-083 GH-086 GH-094  
 GH-108 GH-109 GH-110  
 GH-111 GH-112 GH-134  
 GH-135 GH-139 GH-140  
 GH-017 GH-018 GH-020  
 GH-142 GH-148 GH-149  
 GH-150 GH-151



### BOX SELECTION

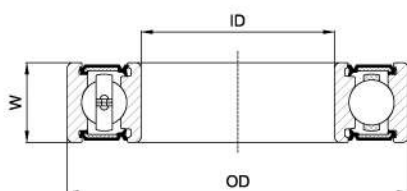
Create your own assortment box, using your selection from the 160 different stickers that come with this box, all drawings at scale 1:1

**NEW**



## CARTRIDGE BEARING

**Races:** CrMo  
**Balls:** CrMo (HRC 61-66)  
**Retainer:** Steel  
**Sealing:** Rubber 2RS (light contact)  
**Grease:** Multemp SRL (Kyodo Yushi)  
**Tolerance:** ABEC-3



### CARTRIDGE BEARING

Item No.	Bearing No.	IDxODxW
CB-010	MR105	5x10x4
CB-011	685	5x11x5
CB-012	695	5x13x4
CB-013	605	5x14x5
CB-020	MR106	6x10x3
CB-021	686	6x13x5
CB-022	696	6x15x5
CB-024	606	6x17x6
CB-025	626	6x19x6
CB-030	MR137	7x13x4
CB-031	607	7x19x6
CB-040	688	8x16x5
CB-041	698	8x19x6
CB-042	608	8x22x7
CB-050	689	9x17x5
CB-051	699	9x20x6
CB-053	R6	3/8"x7/8"x9/32"
CB-056	609	9x24x7
CB-058	629	9x26x8
CB-060	6700	10x15x4
CB-061	6800	10x19x5
CB-062	63800	10x19x7
CB-064	6900	10x22x6
CB-065	6000	10x26x8
CB-066	MR16100	10x28x8
CB-067	6200	10x30x9
CB-070	6701	12x18x4
CB-071	6801	12x21x5
CB-072	63801	12x21x7

### CARTRIDGE BEARING

Item No.	Bearing No.	IDxODxW
CB-074	6901	12x24x6
CB-075	6001	12x28x8
CB-078	6201	12x32x10
CB-080	6702	15x21x4
CB-081	6802	15x24x5
CB-082	63802	15x24x7
CB-083	MR15267	15x26x7
CB-084	MR15268	15x26x8
CB-085	6902	15x28x7
CB-086	6002	15x32x9
CB-088	6202	15x35x11
CB-091	MR16287	16x28x7
CB-093	MR163110	16x31x10
CB-100	6703	17x23x4
CB-101	6803	17x26x5
CB-104	MR17286	17x28x6
CB-105	MR17287	17x28x7
CB-106	6903	17x30x7
CB-107	6003	17x35x10
CB-108	6203	17x40x12
CB-110	MR18307	18x30x7
CB-130	6704	20x27x4
CB-131	MR20307	20x30x7
CB-132	6804	20x32x7
CB-133	63804	20x32x10
CB-134	6904	20x37x9
CB-135	6004	20x42x12
CB-137	MR18338	18x33x8
CB-138	MR215317	21.5x31x7

### CARTRIDGE BEARING

Item No.	Bearing No.	IDxODxW
CB-139	6904	21.5x37x9
CB-140	6004	21.5x42x12
CB-141	MR22378	22x37x8
CB-145	MR22378B	22x37x8/11.5
CB-146	MR22378-E	22x37x8/11.5
CB-160	MR24377	24x37x7
CB-162	MR24378	24x37x8
CB-170	6705	25x32x4
CB-171	6805/6	25x37x6
CB-172	6805	25x37x7
CB-174	63805	25x37x10
CB-176	6905	25x42x9
CB-178	6005	25x47x12
CB-180	6805B	25.1x37x7
CB-190	MR27537	27.5x37x7
CB-200	R8	1/2"x1-1/8"x 5/16"
CB-210	6706	30x37x4
CB-212	6806	30x42x7
CB-214	6906	30x47x9
CB-230	MR314357	31x43.5x7
CB-240	6707	35x44x5
CB-244	6807	35x47x7
CB-251	6708	40x50x6
CB-252	6808	40x52x7
CB-260	6809	45x58x7
CB-270	6710	50x62x6
CB-271	6810	50x65x7

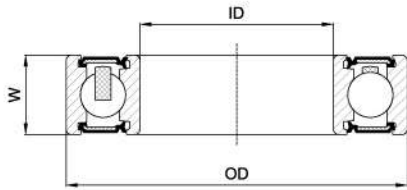


**NEW**



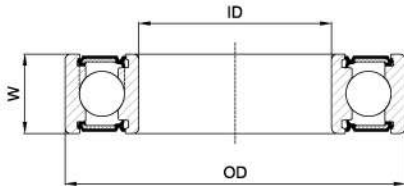
## CERAMIC BEARING

**Races:** CrMo  
**Balls:** Si<sub>3</sub>N<sub>4</sub> Silicon Nitride (HRC 75-89)  
**Retainer:** Nylon  
**Sealing:** Rubber LLB (non contact)  
**Grease:** Multemp PS2 (Kyodo Yushi)  
**Tolerance:** ABEC-5



### CERAMIC BEARING

Item No.	Bearing No.	IDxODxW
CB-305	686 CER	6x13x5
CB-308	626 CER	6x19x6
CB-311	697 CER	7x17x5
CB-314	607 CER	7x19x6
CB-317	688 CER	8x16x5
CB-320	608 CER	8x22x7
CB-323	6800 CER	10x19x5
CB-326	6900 CER	10x22x6
CB-329	6000 CER	10x26x8
CB-332	6801 CER	12x21x5
CB-335	6901 CER	12x24x6
CB-338	6001 CER	12x28x8
CB-341	6802 CER	15x24x5
CB-344	MR15267 CER	15x26x7
CB-347	6902 CER	15x28x7
CB-350	6803 CER	17x26x5
CB-353	MR17287 CER	17x28x7
CB-356	6903 CER	17x30x7
CB-365	6804 CER	20x32x7
CB-368	6904 CER	20x37x9
CB-371	MR24377 CER	24x37x7
CB-374	6805 CER	25x37x7
CB-377	6806 CER	30x42x7
CB-380	6807 CER	35x47x7



## MAX BEARING

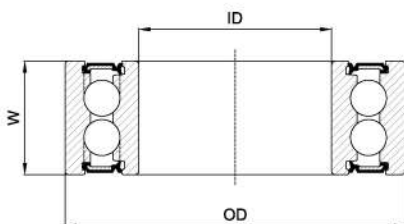


**Races:** CrMo  
**Balls:** CrMo (HRC 61-66)  
**Retainer:** Non (full ball bearing)  
**Sealing:** Rubber LLU (full contact)  
**Grease:** Multemp SLR (Kyodo Yushi)



MAX BEARING		
Item No.	Bearing No.	IDxODxW
CB-420	668V MAX	8x16x5
CB-423	698V MAX	8x19x6
CB-426	608V MAX	8x22x7
CB-429	6800V MAX	10x19x5
CB-432	63800V MAX	10x19x7
CB-435	6900V MAX	10x22x6
CB-438	6000V MAX	10x26x8
CB-441	6801V MAX	12x21x5
CB-444	6901V MAX	12x24x6
CB-447	6001V MAX	12x28x8

MAX BEARING		
Item No.	Bearing No.	IDxODxW
CB-450	6802V MAX	15x24x5
CB-453	6902V MAX	15x28x7
CB-456	6803V MAX	17x26x5
CB-459	17286V MAX	17x28x6
CB-462	6903V MAX	17x30x7
CB-465	6804V MAX	20x32x7
CB-468	6805V MAX	25x37x7
CB-471	6808V MAX	40x52x7
CB-474	6809V MAX	45x58x7



## MAX DOUBLE ROW BEARING



**Races:** CrMo  
**Balls:** CrMo (HRC 61-66)  
**Retainer:** Non (full ball bearing)  
**Sealing:** Rubber LLU (full contact)  
**Grease:** Multemp SLR (Kyodo Yushi)



MAX DOUBLE ROW BEARING		
Item No.	Bearing No.	IDxODxW
CB-620	DR11197V MAX	11x19x7 double row
CB-625	3801V MAX	12x21x8 double row
CB-630	3901V MAX	12x24x10 double row
CB-635	3802V MAX	15x24x7 double row
CB-640	DR17289V MAX	17x28x9 double row

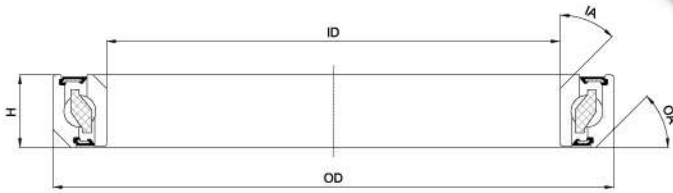




## HEADSET BEARING



**Races:** CrMo  
**Balls:** CrMo (HRC 61-66)  
**Retainer:** Nylon  
**Sealing:** Rubber LLU (full contact)  
**Grease:** Multemp SRL (Kyodo Yushi)



HEADSET BEARING		
Item No.	IDxODxH	IA/OA
CB-706	27.2x38x6.5	36°/45°
CB-710	30.2x39x6.5	45°/45°
CB-713	30.2x41x6.5	36°/45°
CB-714	30.2x41x6.5	45°/45°
CB-715	30.2x41x7	36°/45°
CB-716	30.2x41x7	45°/45°
CB-720	30.2x41.5x6.5	36°/36°
CB-723	30.2x41.8x6.5	45°/45°
CB-725	30.2x41.8x7	45°/45°
CB-732	30.5x41.8x6.5	45°/45°
CB-735	30.5x41.8x8	45°/45°
CB-740	31x41.8x8	45°/45°
CB-745	33.05x43.8x7	30°/45°
CB-751	34.1x46x7	45°/45°
CB-752	34.1x46.8x7	45°/45°

HEADSET BEARING		
Item No.	IDxODxH	IA/OA
CB-755	34.1x46.9x7	45°/45°
CB-762	37x46.9x7	45°/45°
CB-764	37x48x6.5	36°/45°
CB-766	37x48x7	45°/45°
CB-768	37x49x6.5	36°/45°
CB-770	37x49x7	45°/45°
CB-774	40x51x6.5	36°/36°
CB-776	40x51.8x7.5	36°/45°
CB-778	40x51.8x8	36°/45°
CB-780	40x51.9x8	45°/45°
CB-782	40x52x6.5	36°/45°
CB-784	40x52x7	45°/45°
CB-786	40x52x7.5	45°/45°
CB-790	40x52x8	45°/45°





Hub & BB



E-bike motor



MAX suspension pivot



Headset

Hub & BB

E-bike motor

MAX suspension pivot

Headset

Cartridge bearing		
Type	Bearing number	Dimensions IDxODxW
CB-042	608	8x22x7
CB-061	6800	10x19x5
CB-065	6000	10x26x8
CB-071	6801	12x21x5
CB-074	6901	12x24x6
CB-075	6001	12x28x8
CB-081	6802	15x24x5
CB-083	MR15247	15x26x7
CB-085	6902	15x28x7
CB-086	6002	15x32x9
CB-091	MR16287	16x28x7
CB-101	6803	17x26x5
CB-105	MR17287	17x28x7
CB-106	6903	17x30x7
CB-110	MR18307	18x30x7
CB-132	6804	20x32x7
CB-160	MR24377	24x37x7
CB-171	6805/6	25x37x6
CB-172	6805	25x37x7
CB-212	6806	30x42x7

2 pcs. each

Cartridge bearing		
Type	Bearing number	Dimensions IDxODxW
CB-042	608	8x22x7
CB-056	609	9x24x7
CB-065	6000	10x26x8
CB-074	6901	12x24x6
CB-078	6201	12x32x10
CB-106	6903	17x30x7
CB-134	6904	20x37x9
CB-135	6004	20x42x12
CB-137	MR18338	18x33x8
CB-139	6904 d21.5	21,5x37x9
CB-140	6004 d21.5	21,5x42x12
CB-172	6805	25x37x7
CB-214	6906	30x47x9
CB-244	6807	35x47x7
CB-252	6808	40x52x7
CB-260	6809	45x58x7

2 pcs. each

Max cartridge bearing - single row (full ball)		
Type	Bearing number	Dimensions IDxODxW
CB-420	688V MAX	8x16x5
CB-423	698V MAX	8x19x6
CB-426	608V MAX	8x22x7
CB-429	6800V MAX	10x19x5
CB-432	63800V MAX	10x19x7
CB-435	6900V MAX	10x22x6
CB-438	6000V MAX	10x26x8
CB-441	6801V MAX	12x21x5
CB-444	6901V MAX	12x24x6
CB-447	6001V MAX	12x28x8
CB-450	6802V MAX	15x24x5
CB-453	6902V MAX	15x28x7
CB-456	6803V MAX	17x26x5
CB-462	6903V MAX	17x30x7
CB-465	6804V MAX	20x32x7
CB-468	6805V MAX	25x37x7

2 pcs. each

Headset bearing				
Type	ID	OD	Height	Angle (IA/OA)
CB-713	30,15	41,00	6,5	36°/45°
CB-714	30,15	41,00	6,5	45°/45°
CB-715	30,15	41,00	7	36°/45°
CB-716	30,15	41,00	7	45°/45°
CB-723	30,15	41,80	6,5	45°/45°
CB-725	30,15	41,80	7	45°/45°
CB-735	30,50	41,80	8	45°/45°
CB-752	34,10	46,80	7	45°/45°
CB-762	37,00	46,90	7	45°/45°
CB-774	40,00	51,00	6,5	36°/36°
CB-776	40,00	51,80	7,5	36°/45°
CB-778	40,00	51,80	8	36°/45°
CB-780	40,00	51,90	8	45°/45°
CB-784	40,00	52,00	7	45°/45°
CB-786	40,00	52,00	7,5	45°/45°
CB-790	40,00	52,00	8	45°/45°

2 pcs. each



**Or** Organic compound is specially formulated to produce excellent all around performance, perfect for everyday use.

**Sin** Sintered compound is designed to produce consistent performance in all condition, offer high durability and high resistance to contamination by mud, water, sand and grit.

**\*** With spring

**A** AVID

**C** CAMPAGNOLO

**C** CLARKS

**F** FORMULA

**G** GIANT

**H** HAYES

**H** HOPE

**M** MAGURA

**P** PROMAX

**S** SHIMANO

**S** SRAM

**T** TEKTRO

**Z** ZOOM

**A** AVID

DBP-11

Or

DBP-11S

Sin

\*



for AVID Juicy BB7 / Juicy Ultimate and PROMAX DSK-950

**A** AVID

DBP-34

Or

DBP-34S

Sin

\*



for AVID Code

**A** AVID

DBP-38

Or

DBP-38S

Sin

\*



for AVID BBS

**A** AVID

DBP-44

Or

DBP-44S

Sin

\*



for AVID Elixir / DB and SRAM XX / XO series

**A** AVID

DBP-57

Or

DBP-57S

Sin

\*



for AVID XO trail and SRAM GUIDE

**A** AVID

DBP-63

Or

DBP-63S

Sin

\*



for AVID DB1 / DB3

**C** CAMPAGNOLO

DBP-67

Or



for CAMPAGNOLO

**C** CLARKS

DBP-62

Or



for CLARKS CMB-8

**F** FORMULA

DBP-07

Or



for FORMULA hydraulic callipers

**F** FORMULA

DBP-16

Or

DBP-16S

Sin

\*



for FORMULA B4 Team / Pro / SL & 4Racing callipers

**F** FORMULA

DBP-31

Or

DBP-31S

Sin

\*



for FORMULA Oro callipers

**F** FORMULA

DBP-42

Or

DBP-42S

Sin

\*



for FORMULA Mega

**F** FORMULA

DBP-50

Or



for FORMULA Activa / MD1 mechanical callipers

**G** GIANT

DBP-21

Or



for GIANT MPH 2 / 3 callipers

**G** GIANT

DBP-51

Or



for GIANT MPH 1 callipers

**H** HAYES

DBP-01

Or

DBP-01S

Sin



for HAYES HFx and PROMAX hydraulic callipers

**H** HAYES

DBP-26

Or

DBP-26S

Sin



for HAYES Sole / MX2 / MX3

**H** HAYES

DBP-37

Or

DBP-37S

Sin



for HAYES El Camino callipers

**H** HAYES

DBP-40

Or

DBP-40S

Sin

\*



for HAYES Stroker Ryde

**H** HAYES

DBP-41

Or

DBP-41S

Sin



for HAYES Stroker Trial

**H** HAYES

DBP-45

Or

DBP-45S

Sin



for HAYES Ace

**H** HOPE

DBP-05

Or

DBP-05S

Sin



for HOPE open/closed 2-piston callipers Pro / Sport

**H** HOPE

DBP-20

Or

DBP-20S

Sin

\*



for HOPE Mini callipers

**H** HOPE

DBP-22

Or

DBP-22S

Sin

\*



for HOPE M4 / DH4 / E4 callipers

**H** HOPE

DBP-24

Or



for HOPE XC4

**H** HOPE

DBP-28  Or  
DBP-28S  Sin



for HOPE Mono 6-pot callipers \*

**H** HOPE

DBP-29  Or  
DBP-29S  Sin



for HOPE Mono mini callipers \*

**H** HOPE

DBP-35  Or



for HOPE Mono V2 \*

**H** HOPE

DBP-39  Or



for HOPE Mono trial

**H** HOPE

DBP-48  Or  
DBP-48S  Sin



for HOPE X2 \*

**H** HOPE

DBP-58  Or  
DBP-58S  Sin



for HOPE V4 \*

**H** HOPE

DBP-59  Or  
DBP-59S  Sin



for HOPE E4 \*

**M** MAGURA

DBP-04  Or  
DBP-04S  Sin



for MAGURA Clara 2000 / Louise 98-01 callipers

**M** MAGURA

DBP-12  Or  
DBP-12S  Sin



for MAGURA Julie callipers

**M** MAGURA

DBP-14  Or  
DBP-14S  Sin



for MAGURA Clara 2001-2 / Louise 2002/Louise FR callipers

**M** MAGURA

DBP-18  Or



for MAGURA Gustav M callipers \*

**M** MAGURA

DBP-19  Or  
DBP-19S  Sin



for MAGURA Marta / SL callipers

**M** MAGURA

DBP-36  Or  
DBP-36S  Sin



for MAGURA Louise 2007 / Louise Carbon 2008

**M** MAGURA

DBP-55  Or  
DBP-55S  Sin



for MAGURA MT2/ MT4/ MT6/ MT8

**M** MAGURA

DBP-60  Or  
DBP-60S  Sin



for MAGURA MT5/MT7

**M** MAGURA

DBP-65  Or  
DBP-65S  Sin



for MAGURA MTS (2015-)

**P** PROMAX

DBP-30  Or



for PROMAX DSK-400 / 601J / X-nine

**S** SHIMANO

DBP-09  Or  
DBP-09S  Sin



for SHIMANO Deore XT M755 / 756 / GRIMECA System 8.0+12 / SRAM 9.0 / HOPE Mono M4 callipers \*

**S** SHIMANO

DBP-10  Or  
DBP-10S  Sin



for SHIMANO Deore M515/M475/ C501/C601 mechanical/M525 hydraulic callipers \*

**S** SHIMANO

DBP-15  Or  
DBP-15S  Sin



for SHIMANO Deore M555 hydraulic / C900 / 901 Nexave callipers \*

**S** SHIMANO

DBP-17  Or  
DBP-17S  Sin



for SHIMANO XTR M965/966/Saint M800/Hone M-601/Deore XT M765/ LX M858 callipers \*

**S** SHIMANO

DBP-43  Or  
DBP-43S  Sin



for SHIMANO Saint \*

**S** SHIMANO

DBP-52  Or  
DBP-52S  Sin



for SHIMANO XTR 2011-2016 \*

**S** SHIMANO

DBP-64  Or  
DBP-64S  Sin



for SHIMANO Ultegra \*

**S** SRAM

DBP-54  Or  
DBP-54S  Sin



for SRAM Red / Level

**T** TEKTRO

DBP-08  Or  
DBP-08S  Sin



for TEKTRO mechanical callipers

**T** TEKTRO

DBP-27  Or  
DBP-27S  Sin



for TEKTRO Volans / Auriga / E-Sub \*

**T** TEKTRO

DBP-46  Or



for TEKTRO IOX

**T** TEKTRO

DBP-56  Or  
DBP-56S  Sin



for TEKTRO Lyra

**Z** ZOOM

DBP-23  Or



for ZOOM



## Disc Brake Pads E-Bike

Substitute your standard disc brake pad of your E-bike with a special UNION E-bike pad  
 The E-bike pad has a special compound with a high percentage of KEVLAR®  
 The life span will be 50% longer than standard organic versions of these pads  
 No brake power fading due to overheated brake pads  
 The E-bike pads offer consistent and smooth braking power, also at higher speed

**DBP-10E**  
for Shimano Deore



**DBP-43E**  
for Shimano Saint



**DBP-52E**  
for Shimano XTR 2011-



**DBP-44E**  
for AVID Elixir



**DBP-53E**  
for AVID code / SRAM



**DBP-57E**  
for AVID XO / SRAM Guide



**DBP-55E**  
for Magura MT-2/4/6/8



**DBP-60E**  
for Magura MT-5/7



**DBP-65E**  
for Magura MT-5 (2015-)



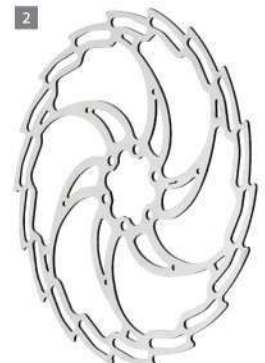
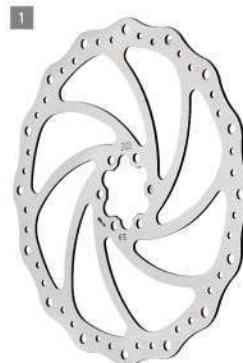
**DBP-61E**  
for Tektro Dorado



## Disc Brake Rotors

Special high grade stainless steel,  
 excellent wet/dry performance, disc wear and heat dissipation

1	Wavy	DBR-02-160	ø160mm	Stainless Steel	6 bolts
		DBR-02-180	ø180mm		
		DBR-02-203	ø203mm		
2	WindCutter	DBR-03-160	ø160mm		
		DBR-03-180	ø180mm		
		DBR-03-203	ø203mm		



## Disc Brake Pads with Cooling Fins

The cooling fin helps to prevent heat build-up by improving the heat dissipation and reduce the brake-pad surface temperature by 50°C  
 No brake power fading due to overheated brake pads  
 Exactly the same specifications as originally supplied, ensuring consistent performance  
 Brake pad compound with high friction coefficient that offers consistent and smooth braking power

### DBP-44C-SET

for AVID DB / Elixir



### DBP-42C-SET

for FORMULA Mega One



### DBP-55C-SET

for MAGURA MT2 / MT4 / MT6 / MT8



### DBP-17C-SET

for SHIMANO XTR -2010



### DBP-52C-SET

for SHIMANO XTR 2011-2016



### DBP-64C-SET

for SHIMANO Ultegra



### ASSORTMENT BOX TOP-20

CONTENT :	DBP-11	AVID	DBP-12	MAGURA
	DBP-38	AVID	DBP-14	MAGURA
	DBP-44	AVID	DBP-36	MAGURA
	DBP-57	AVID	DBP-55	MAGURA
	DBP-31	FORMULA	DBP-10	SHIMANO
	DBP-42	FORMULA	DBP-17	SHIMANO
	DBP-01	HAYES	DBP-52	SHIMANO
	DBP-26	HAYES	DBP-64	SHIMANO
	DBP-40	HAYES	DBP-08	TEKTRO
	DBP-04	MAGURA	DBP-46	TEKTRO

### WORKSHOP BOXES (25 PRS.)

Packed per 25 sets incl. spring and pin  
 Boxes are stackable  
 8 different models available

DBP-10 bulk box	DBP-44 bulk box
DBP-11 bulk box	DBP-52 bulk box
DBP-17 bulk box	DBP-55 bulk box
DBP-42 bulk box	DBP-64 bulk box





### BS-300

- V-Brake brake shoes, cartridge
- Aluminium pad holder
- Silver finish
- Length: 72mm
- Also available in black finish



### BS-301

- Pads & pins only, for BS-300
- Length: 72mm



### BS-320

- V-Brake brake shoes, cartridge
- Aluminium pad holder
- Silver finish
- Triple color pad
- Length: 72mm



### BS-321

- Pads & pins only, for BS-320
- Length: 72mm



### BS-400

- V-Brake brake shoes
- Non-symmetric post
- Length: 72mm



### BS-420

- V-Brake brake shoes
- Symmetric post
- Length: 70mm



### BS-440

- V-Brake brake shoes
- Non-symmetric post
- Length: 80mm
- Specially designed for E-Bike



### BS-460

- V-Brake brake shoes
- Symmetric post
- Length: 75mm
- Specially designed for E-Bike



### BS-500

- Cantilever brake shoes
- Hardened Aluminium post (non-symmetric)
- Length: 72mm



### BS-520

- Cantilever brake shoes
- Hardened Aluminium post (symmetric)
- Length: 70mm



### BS-560

- Cantilever brake shoes
- Symmetric post
- Length: 55mm



### BS-600

- Road racing brake shoes, cartridge
- Shimano type
- Aluminium pad holder
- Silver finish
- Length: 55mm
- Also available in black finish



### BS-601

- Pads only, for BS-600
- For Aluminium rims
- Length: 55mm



### BS-620

- Road racing brake shoes
- Universal type
- Length: 50mm



### BS-641

- Pads only, for BS-640
- For Aluminium rims
- Length: 55mm



### BS-660

- Road racing brake shoes, cartridge
- Campagnolo Record & Chorus -2000
- Aluminium pad holder
- Carbon anodized finish
- Length: 55mm



### BS-661

- Pads only, for BS-660
- For Aluminium rims
- Length: 55mm



### BS-801

- For Magura hydraulic rim brake
- Replacement pads only
- Length: 50mm



### BS-801E

- For Magura hydraulic rim brake
- Replacement pads only
- Length: 50mm
- Specially designed for E-Bike



## WORKSHOP BOXES

- Packed per 25 sets in a sturdy plastic box
- Boxes are stackable
- 6 different models available in a workshop box:

BS-300 bulk box  
BS-400 bulk box  
BS-420 bulk box

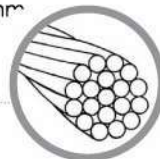
BS-500 bulk box  
BS-520 bulk box  
BS-560 bulk box





**CW-100**  
 Brake cable, 1.6mm,  
 galvanized steel,  
 19 strands, length 2250mm

**CW-120**  
 Brake cable, 1.6mm,  
 stainless steel, 19 strands,  
 length 2250mm



**CW-200**  
 Shift/derailleur cable,  
 1.2mm, galvanized steel,  
 19 strands, length 2100mm

**CW-220**  
 Shift/derailleur cable,  
 1.2mm, stainless steel,  
 19 strands, length 2100mm



**CW-350**  
 Shift/derailleur casing,  
 Shimano-type stranded core,  
 black, dia. 4mm,  
 length 2000mm



**CW-400**  
 Complete brake cable set,  
 galvanized steel (2250mm),  
 including outer casing and parts



**CW-440**  
 Complete shift/derailleur cable set, galvanized steel  
 (2100mm), including outer casing  
 (Shimano-type) and parts

**CW-420**  
 Complete brake cable set,  
 stainless steel (2250mm),  
 including outer casing and parts

**CW-460**  
 Complete shift/derailleur cable set , stainless steel  
 (2100mm), including outer casing (Shimano-type)  
 and parts



**CW-900**  
 Brake ferrules  
 200 pcs. in a dispenser bottle



**CW-910**  
 Shift ferrules  
 150 pcs. in dispenser bottle



**CW-920**  
 Brake end caps  
 500 pcs. in dispenser bottle



**CW-930**  
 Shift end caps  
 500 pcs. in dispenser bottle



<b>CW-430</b>		Complete drumbrake cable set, galvanized steel (2250mm) Gazelle-type Including outer casing and all parts
<b>CW-434</b>		Complete drumbrake cable set, galvanized steel (2250mm) Universal type with adjusting screw Including outer casing and all parts
<b>CW-438</b>		Complete drumbrake cable set, galvanized steel (2250mm) Batavus-type with hook Including outer casing and all parts
<b>CW-470</b>		Complete shift cable set, galvanized steel (2500mm) SRAM / Sachs Torpedo Including outer casing and all parts

### CW-600

Brake cable, 1.6mm, galvanized steel, 19 strands, with barrel (7x6)  
100 pcs. of 1800mm, in workshop box

### CW-620

Brake cable, 1.6mm, stainless steel, 19 strands, with barrel (7x6)  
100 pcs. of 1800mm, in workshop box

### CW-625

Brake cable, 1.6mm, stainless steel, 19 strands, with pear (10x6)  
100 pcs. of 1800mm, in workshop box

### CW-700

Shift/derailleur cable, 1.2mm, galvanized steel, 19 strands, with barrel (4x4)  
100 pcs. of 2100mm, in workshop box

### CW-720

Shift/derailleur cable, 1.2mm, stainless steel, 19 strands, with barrel (4x4)  
100 pcs. of 2100mm, in workshop box



### CW-590

V-Brake guide pipe, 90 degrees  
With rubber boot

### CW-596

V-Brake guide pipe, flexible  
With rubber boot

### CW-595

V-Brake guide pipe, 135 degrees  
With rubber boot



### CW-800

Brake outer casing, universal coiled core, dia. 5mm  
(CW-300) 30 metres in workshop box, black

### CW-810

Brake outer casing, universal coiled core, dia. 5mm  
(CW-310) 30 metres in workshop box, grey

### CW-850

Shift/derailleur casing, Shimano-type stranded core, dia. 4mm  
(CW-350) 30 metres in workshop box, black

### CW-860

Shift/derailleur casing, Shimano-type stranded core, dia. 4mm  
(CW-360) 30 metres in workshop box, grey



## WBC-10

- TIG-welded Water Bottle Cage**
- Aluminium #6061-T4
  - 154mm length, for ~ Ø74 mm
  - Ø 6.2mm Alum. wire cage
  - Colors: Black or silver
  - Weight: 63 gram



## WBC-20

- TIG-welded Water Bottle Cage**
- Aluminium #6061-T4
  - 153mm length, for ~ Ø74 mm
  - Ø 6.2mm Alum. wire cage
  - Colors: Black or silver
  - Weight: 68 gram



## WBC-25

- Aluminium Plate Water Bottle Cage**
- One piece aluminium type, in welding free design
  - 120 mm length, for ~ Ø74 mm
  - Colors: Black
  - Weight: 49 gram



## WBC-40

- PC Water Bottle Cage**
- Polycarbonate (PC) material
  - Extended and open back side design for more flexibility
  - 145 mm length, for ~ Ø74 mm
  - Colors: Black
  - Weight: 28 gram



## WBC-50

- Aluminium Plate Water Bottle Cage**
- Welding free design
  - Take the bottle from the side, for narrow bike frames and for left or right hand users
  - 130 mm length, for ~ Ø74 mm
  - Color: Black
  - Weight: 43 gram



## BP-01G

- Aluminium Mini Pump with T-handle & Gauge**
- Like BP-01, with additional precise in-line gauge



## BP-02G

- Pocket Aluminium Pump with In-Line Gauge**
- Like BP-02, with additional precise in-line gauge
  - With aluminium lever and aluminium valve cap



## MG-01

- MTB/ATB 24"-26" front and rear fender**
- Clips on and off quickly
  - Incl. all necessary hardware



## MG-03

- Fender for downtube of MTB 22"-26"**
- Assembly by 2 anti-slip rubber woven straps



## MG-04F/R

- Road bike 700C and 26" front fender**
- Light weight design
  - Quick fit by 2 long rubber straps (Front)
  - Quick release system for seat post (Rear)



## MG-11F/R

- MTB 24"-26" front fender**
- Suitable for suspension bikes
  - Special TPR material mudflap
  - Fits steering tubes from 18.5-25.4mm (Front)
  - Quick release system for seat post (Rear)



### GP-01

- Black + grey
- Length: 128mm  
with cutting line at 85mm



### GP-02

- Black + grey
- Length: 128mm  
with cutting line at 90mm



### GP-02L

- Black + grey
- Length: 128mm  
with black lock-on ring  
also available in long/ short  
combination 128mm + 100mm (GP-02LS)



### GP-02LS



### GP-03

- Black
- Length: 130mm  
with cutting line at 95mm



### GP-03L

- Black
- Length: 125mm  
with black lock-on ring  
also available in long/ short  
combination 125mm + 90mm (GP-03LS)



### GP-04

- Black
- Length: 128mm



### GP-05

- Black + grey + dark grey
- Length: 130mm  
with cutting line at 95mm



### GP-06

- Black + gray
- Length: 125mm



### GP-07

- Black + grey
- Length: 130mm  
with cutting line at 95mm





**KS-10**

- Kickstand for rear stay mount
- Material: Aluminium, ED black
- Adjustable 24" - 28"



**KS-20**

- Center mount kickstand (middle assy)
- Material: Aluminium, silver or ED black
- Adjustable 24" - 28"



**KS-30**

- Center mount double leg kickstand
- Material: Aluminium, #6061-T6, ED black
- For bike size 28"
- Foot width 195mm

**KS-35**

- Center mount double leg kickstand
- Material: Aluminium #6061-T6, silver or ED black
- Adjustable 24" - 28"
- Foot width 195mm



**TB-01**

- Tri-bar with arm rest pads
- Material: Aluminium #6061-T6
- Powder coated black
- Weight: 640g



**MB-02**

- Foam set for Multibar
- Damping shock and vibration
- Length 400mm
- Incl. 2 handlebar plugs



### AH-10

- A-head adjustable 0-60 degrees
- Material: Aluminium #6061-T6, black coated
- Bar bore size 25.4mm
- Extension 90mm



### AH-11

- A-head adjustable 0-60 degrees
- Material: Aluminium #6061-T6, black coated
- Bar bore size 25.4mm
- Extension 110mm



### AH-12

- A-head adjustable 0-60 degrees
- Material: Aluminium #6061-T6, black coated
- Bar bore size 25.4mm
- Extension 130mm



### AH-20

- A-head adjustable 0-60 degrees
- Material: Aluminium #6061-T6, black coated
- Bar bore size 31.8mm
- Extension 95mm



### AH-21

- A-head adjustable 0-60 degrees
- Material: Aluminium #6061-T6, black coated
- Bar bore size 31.8mm
- Extension 110mm



### AH-22

- A-head adjustable 0-60 degrees
- Material: Aluminium #6061-T6, black coated
- Bar bore size 31.8mm
- Extension 125mm

### SSP-02

- Suspension seat post
- Material: Aluminium #6061-T6, silver anodized
- Length 350mm, with ATB/micro adjust head
- Diameters 26.8mm and 27.2mm







### HS-10

- Headset threadless 1" for road bike
- SHIS code: EC30/25.4 | EC30/26



### HS-11

- Headset threadless 1 1/8" for MTB
- SHIS code: EC34/28.6 | EC34/30



### HS-30

- Headset 1 1/8" integrated dimension 41.8 / 30
- SHIS code: IS42/28.6 | IS42/30



### HS-35

- Headset 1 1/8" semi-integrated dimension 44 / 30
- SHIS code: ZS44/28.6 | ZS44/30



### HS-40

- Headset 1 1/8" tapered integrated dimension 41.8/52.0-39.8
- SHIS code: IS42/28.6 | IS52/40



### HS-45

- Headset 1 1/8" tapered semi-integrated dimension 44.0/56.0-39.8
- SHIS code: ZS44/28.6 | ZS56/40



### HS-20

- Headset cap for 1" headsets
- Material: Aluminium #6061-T6, black anodized
- Size: 1" cap with 1" star nut
- Stainless steel screw



### HS-21

- Headset cap for 1 1/8" headsets
- Material: Aluminium #6061-T6, black anodized
- Size: 1 1/8" cap with 1 1/8" star nut
- Stainless steel screw



### BB BOTTOM BRACKET CARTRIDGE

- With high-end sealed cartridge bearings
- Steel cups and Boron-steel spindle
- Incl. 2 bolts (CrMo 12.9)
- Available in 14 lengths (from 103 up to 131.5mm)



### BB-E01/E02

- External BB set threaded, Shimano compatible
- 11.2mm (E01) for road bike and 10.2mm (E02) for MTB&city



### BB-E03

- External BB set threaded, SRAM compatible
- 12.5mm for road bike, MTB&city



### BB-PF01

- Press fit BB for 24mm spindle Shimano
- For bracket width 86.5 / 89 / 92mm



### BB-PF02

- Press fit BB for 30mm spindle SRAM / FSA
- For bracket width 68 / 73 / 86.5mm



### BB-RPF01

- Press fit reducer BB set
- Convert to Shimano crank (spindle 24mm)
- For frames with BB shell width 68mm



### BB-RPF02

- Press fit reducer BB set
- Convert to Shimano crank (spindle 24mm)
- For frames with BB shell width 86mm



### BB-RE01

- Press fit reducer sleeve
- Convert to BB set with external thread
- For frames with BB shell width 68mm to 73mm



**UNION®**

**SSR Pro**



**xerama**

**BIKETOOL**

**Selle San Remo**



**MARWI®**  
GROUP

**MARWI Taiwan Industrial Co., Ltd.**

No.56, Chongyi 3rd Rd., Dajia Dist, Taichung City, Taiwan R.O.C.  
Tel: +886-4-26881234 Fax: +886-4-26882141  
E-mail: [info@marwi.com.tw](mailto:info@marwi.com.tw)  
Website: [www.marwi.com.tw](http://www.marwi.com.tw)

**MARWI Indonesia**

P.T. Xerama Bicycle Industrial  
Jl, Raya Curug Km. 2, Kp. Cisereh, Ds, Kadu  
Jaya, Kec. Curug, Tangerang 15810, Indonesia  
Tel: +62-21-5981111 +62-21-5981234  
Fax: +62-21-5981570 +62-21-5980238  
E-mail: [info@marwi.com.tw](mailto:info@marwi.com.tw)

**MARWI Europe B.V.**

Corkstraat 1, 3047 AC Rotterdam, The Netherlands  
Tel: +31-10-2088060  
E-mail: [info@marwi.nl](mailto:info@marwi.nl)  
Website: [www.marwi-eu.com](http://www.marwi-eu.com)

**MARWI EUROPE branch office CZ**

Mala Velen-Jedlka 22, 40502 Decin 2, Czech Republic  
Tel: +420-412-586259 Fax: +420-412-586257  
E-mail: [info@marwi.cz](mailto:info@marwi.cz)  
Website: [www.marwi.cz](http://www.marwi.cz)